



Compressor  
Voltage Code : TZ

TFH5540C

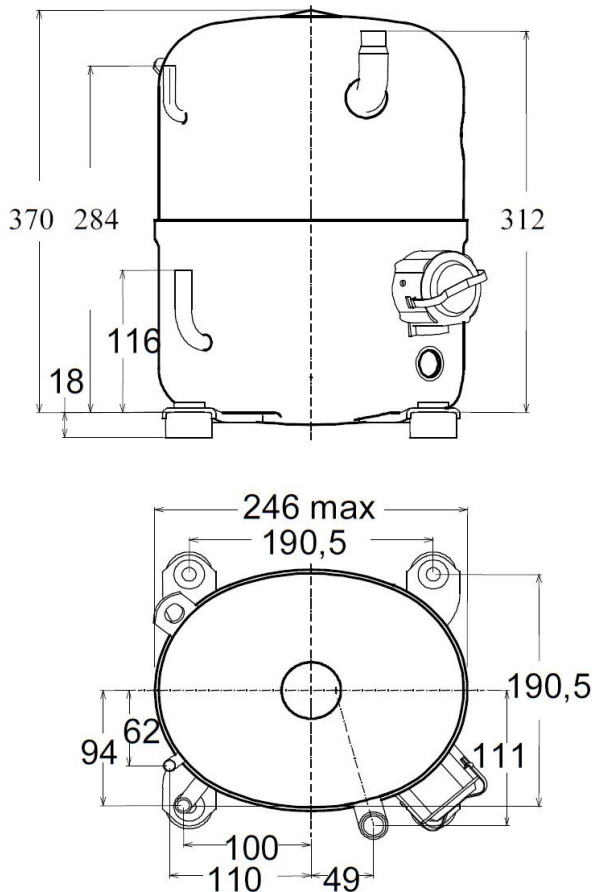
Air Conditioning & Heating (CA)

400V 3~ 50Hz / 440V 3~ 60 Hz

R407C

AHC5540CTZ

Conditions	Frequency	Nominal Cooling Capacity		Sound Power ISO3745 / ISO 3743-1
		Watts	BTU/h	
EN12900 / R407C	50 Hz / 60 Hz	8201 / 9929	27964 / 33856	76 dBA



<b>Displacement (cc)</b>	74,25
<b>Net Weight (Kg)</b>	31.9
<b>Oil Quantity (cc)</b>	1330.0
<b>Oil Type</b>	Polyolester
<b>Expansion Device</b>	Capillary_Tube/Expansion_Valve
<b>Cooling</b>	Fan
<b>Main Winding (Ohm)</b>	4.31
<b>Current</b>	
RLA (A)	5   5
MCC (A)	10.6   10.8
LRA (A)	36   39
<b>Electrical Equipment</b>	TRI
<b>Overload</b>	Interne
<b>Refrigerating connection for OD</b>	
Suction Tube	19 (3/4")
Discharge Tube	9.5 (3/8")
Process Tube	6.35 (1/4")

\* EN12900 : T°Cond. 50.0°C / T°Evap. 5.0°C / T°Superheat. 10.0°C  
T°Subcooling. 0.0K

Certificates :



Note : Tecumseh reserves the right to change information contained in this document without notification.



**Tecumseh**

<b>TFH5540C</b>	<b>Tension TZ : 400V 3~ 50Hz / 440V 3~ 60 Hz</b>
-----------------	--

Les performances sont données dans les <b>conditions EN12900</b> :	Surchauffe :	10.0 K
Condition Mid	Sous refroidissement :	0.0 K
The performance data are in <b>EN12900 conditions</b> :	Superheat :	10.0 K
Mid Condition	Subcooling :	0.0 K

<b>50 Hz R407C</b>											
											<b>N°345YL-T</b>
4   T condensation	5   T évaporation	(°C)	-25	-20	-15	-10	-5	0	5	10	15
<b>40</b>	1   P frigorifique	(Watt)				4673	6151	7915	9994	12416	15210
	2   P absorbée	(W)				2340	2638	2947	3258	3563	3853
	3   I absorbée	(A)				4.97	5.30	5.65	6.01	6.38	6.77
<b>50</b>	1   P frigorifique	(Watt)					4908	6409	8201	10311	12770
	2   P absorbée	(W)					2721	3062	3420	3788	4157
	3   I absorbée	(A)					5.45	5.86	6.29	6.74	7.20
<b>60</b>	1   P frigorifique	(Watt)						4980	6463	8241	10342
	2   P absorbée	(W)						3193	3579	3991	4419
	3   I absorbée	(A)						6.08	6.58	7.10	7.63

<b>60 Hz R407C</b>											
											<b>N°345YL-T</b>
4   T condensation	5   T évaporation	(°C)	-25	-20	-15	-10	-5	0	5	10	15
<b>40</b>	1   P frigorifique	(Watt)				5894	7601	9570	11832	14417	17354
	2   P absorbée	(W)				2981	3358	3751	4163	4600	5066
	3   I absorbée	(A)				5.21	5.67	6.14	6.65	7.17	7.71
<b>50</b>	1   P frigorifique	(Watt)					6168	7917	9929	12232	14857
	2   P absorbée	(W)					3456	3885	4337	4815	5324
	3   I absorbée	(A)					5.77	6.34	6.94	7.55	8.19
<b>60</b>	1   P frigorifique	(Watt)						6191	7934	9940	12236
	2   P absorbée	(W)						4007	4488	4998	5541
	3   I absorbée	(A)						6.32	7.01	7.71	8.44

1 = cooling capacity 2 = power input 3 = current 4 = condensing temperature 5 = evaporating temperature

**Nota : Tecumseh se réserve le droit de modifier les informations contenues dans ce document sans préavis.**  
**Note : Tecumseh reserves the right to change information contained in this document without notification.**

© 2021 Tecumseh Products Company  
All rights reserved