



Compressor
Voltage Code : TZ

TAG4573T

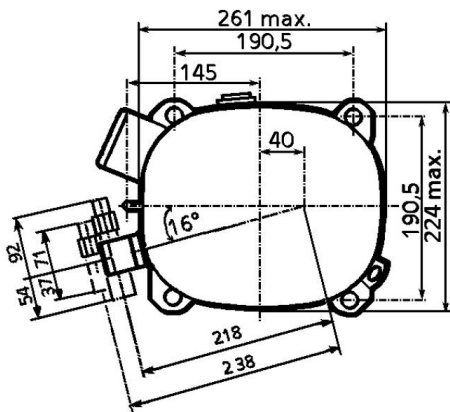
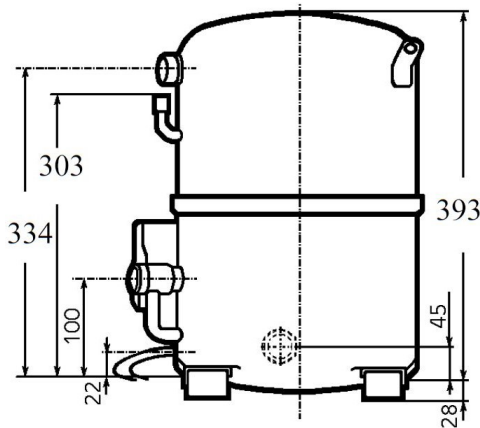
High Temp. Commercial (HP)

400V 3~ 50Hz / 440V 3~ 60 Hz

R22

AGB4573TTZ

Conditions	Frequency	Nominal Cooling Capacity		Sound Power ISO3745 / ISO 3743-1
		Watts	BTU/h	
EN12900_MHP / R22	50 Hz / 60 Hz	9110 / 10801	31066 / 36830	75 dBA



Displacement (cc)	134,8
Net Weight (Kg)	48.0
Oil Quantity (cc)	1760.0
Oil Type	Mineral
Expansion Device	Capillary_Tube/Expansion_Valve
Cooling	Fan
Main Winding (Ohm)	2.2
Current	
RLA (A)	11 11.8
MCC (A)	18 18
LRA (A)	56 61
Electrical Equipment	TRI
Overload	Interne
Refrigerating connection for OD	
Suction Tube	28.6 (1"1/8)
Discharge Tube	15.9 (5/8")
Process Tube	6.35 (1/4")

* EN12900_MHP : T°Cond. 45.0°C / T°Evap. -10.0°C / T°Return gas temp.. 20.0°C
T°Subcooling. 0.0K

Certificates :



Note : Tecumseh reserves the right to change information contained in this document without notification.



Tecumseh

TAG4573T	Tension TZ : 400V 3~ 50Hz / 440V 3~ 60 Hz
-----------------	--

Les performances sont données dans les conditions EN12900_MHP :	Gaz aspirés :	20.0 °C
Condition Dew	Sous refroidissement :	0.0 K
The performance data are in EN12900_MHP conditions :	Return gas :	20.0 °C
Dew Condition	Subcooling :	0.0 K

50 Hz R22										
N°237LU-T										
4 T condensation	5 T évaporation	(°C)	-20	-15	-10	-5	0	5	10	15
40	1 P frigorifique	(Watt)	6006	7841	10054	12687	15777	19362	23476	28151
	2 P absorbée	(W)	2883	3428	3989	4541	5060	5523	5906	6184
	3 I absorbée	(A)	6.41	7.17	7.88	8.55	9.18	9.77	10.3	10.8
50	1 P frigorifique	(Watt)	4603	6195	8145	10493	13275	16527	20279	24558
	2 P absorbée	(W)	2781	3399	4060	4739	5413	6058	6649	7164
	3 I absorbée	(A)	6.16	7.06	7.95	8.82	9.68	10.5	11.3	12.2
60	1 P frigorifique	(Watt)		4537	6186	8213	10651	13534	16886	20732
	2 P absorbée	(W)		3317	4087	4903	5741	6577	7387	8147
	3 I absorbée	(A)		6.96	8.02	9.09	10.2	11.3	12.4	13.5

60 Hz R22										
N°237LU-T										
4 T condensation	5 T évaporation	(°C)	-20	-15	-10	-5	0	5	10	15
40	1 P frigorifique	(Watt)	7190	9320	11863	14861	18352	22374	26961	32143
	2 P absorbée	(W)	3069	3855	4705	5559	6357	7040	7548	7822
	3 I absorbée	(A)	10.8	12.8	14.7	16.6	18.5	20.3	22.1	23.8
50	1 P frigorifique	(Watt)	5534	7415	9694	12412	15605	19306	23547	28353
	2 P absorbée	(W)	2980	3864	4845	5863	6858	7771	8543	9112
	3 I absorbée	(A)	10.3	12.6	14.8	17.1	19.5	21.9	24.3	26.7
60	1 P frigorifique	(Watt)		5435	7397	9782	12624	15952	19794	24169
	2 P absorbée	(W)		3774	4907	6111	7326	8491	9547	10435
	3 I absorbée	(A)		12.4	15.0	17.7	20.5	23.4	26.4	29.6

1 = cooling capacity 2 = power input 3 = current 4 = condensing temperature 5 = evaporating temperature

Nota : Tecumseh se réserve le droit de modifier les informations contenues dans ce document sans préavis.

Note : Tecumseh reserves the right to change information contained in this document without notification.

© 2021 Tecumseh Products Company
All rights reserved