



Compressor  
Voltage Code : TZ

**TAG4573T**

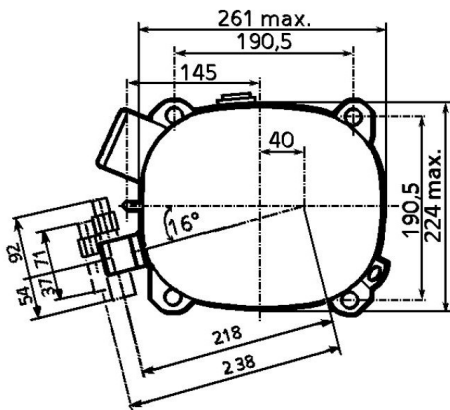
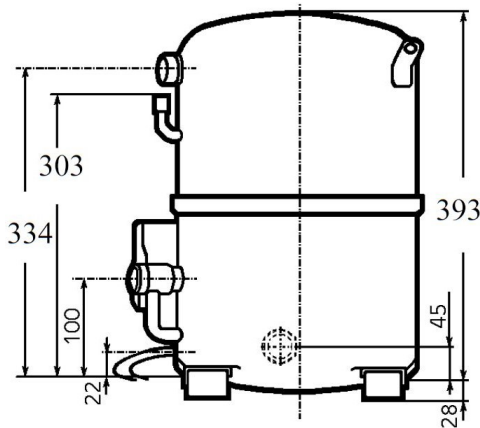
High Temp. Commercial (HP)

400V 3~ 50Hz / 440V 3~ 60 Hz

R22

AGB4573TTZ

Conditions	Frequency	Nominal Cooling Capacity		Sound Power ISO3745 / ISO 3743-1
		Watts	BTU/h	
EN12900_HP / R22	50 Hz / 60 Hz	16527 / 19306	56357 / 65834	75 dBA



<b>Displacement (cc)</b>	134,8
<b>Net Weight (Kg)</b>	48.0
<b>Oil Quantity (cc)</b>	1760.0
<b>Oil Type</b>	Mineral
<b>Expansion Device</b>	Capillary_Tube/Expansion_Valve
<b>Cooling</b>	Fan
<b>Main Winding (Ohm)</b>	2.2
<b>Current</b>	
RLA (A)	11   11.8
MCC (A)	18   18
LRA (A)	56   61
<b>Electrical Equipment</b>	TRI
<b>Overload</b>	Interne
<b>Refrigerating connection for OD</b>	
Suction Tube	28.6 (1"1/8)
Discharge Tube	15.9 (5/8")
Process Tube	6.35 (1/4")

\* EN12900\_HP : T°Cond. 50.0°C / T°Evap. 5.0°C / T°Return gas temp.. 20.0°C  
T°Subcooling. 0.0K

Certificates :



Note : Tecumseh reserves the right to change information contained in this document without notification.



**Tecumseh**

<b>TAG4573T</b>	<b>Tension TZ : 400V 3~ 50Hz / 440V 3~ 60 Hz</b>
-----------------	--

Les performances sont données dans les <b>conditions EN12900_HP</b> :	Gaz aspirés :	20.0 °C
Condition Dew	Sous refroidissement :	0.0 K
The performance data are in <b>EN12900_HP conditions</b> :	Return gas :	20.0 °C
Dew Condition	Subcooling :	0.0 K

**50 Hz R22**

**N°237LU-T**

4   T condensation	5   T évaporation	(°C)	-20	-15	-10	-5	0	5	10	15
<b>40</b>	1   P frigorifique	(Watt)	6006	7841	10054	12687	15777	19362	23476	28151
	2   P absorbée	(W)	2883	3428	3989	4541	5060	5523	5906	6184
	3   I absorbée	(A)	6.41	7.17	7.88	8.55	9.18	9.77	10.3	10.8
<b>50</b>	1   P frigorifique	(Watt)	4603	6195	8145	10493	13275	16527	20279	24558
	2   P absorbée	(W)	2781	3399	4060	4739	5413	6058	6649	7164
	3   I absorbée	(A)	6.16	7.06	7.95	8.82	9.68	10.5	11.3	12.2
<b>60</b>	1   P frigorifique	(Watt)		4537	6186	8213	10651	13534	16886	20732
	2   P absorbée	(W)		3317	4087	4903	5741	6577	7387	8147
	3   I absorbée	(A)		6.96	8.02	9.09	10.2	11.3	12.4	13.5

**60 Hz R22**

**N°237LU-T**

4   T condensation	5   T évaporation	(°C)	-20	-15	-10	-5	0	5	10	15
<b>40</b>	1   P frigorifique	(Watt)	7190	9320	11863	14861	18352	22374	26961	32143
	2   P absorbée	(W)	3069	3855	4705	5559	6357	7040	7548	7822
	3   I absorbée	(A)	10.8	12.8	14.7	16.6	18.5	20.3	22.1	23.8
<b>50</b>	1   P frigorifique	(Watt)	5534	7415	9694	12412	15605	19306	23547	28353
	2   P absorbée	(W)	2980	3864	4845	5863	6858	7771	8543	9112
	3   I absorbée	(A)	10.3	12.6	14.8	17.1	19.5	21.9	24.3	26.7
<b>60</b>	1   P frigorifique	(Watt)		5435	7397	9782	12624	15952	19794	24169
	2   P absorbée	(W)		3774	4907	6111	7326	8491	9547	10435
	3   I absorbée	(A)		12.4	15.0	17.7	20.5	23.4	26.4	29.6

1 = cooling capacity 2 = power input 3 = current 4 = condensing temperature 5 = evaporating temperature

**Nota : Tecumseh se réserve le droit de modifier les informations contenues dans ce document sans préavis.**

**Note : Tecumseh reserves the right to change information contained in this document without notification.**

© 2021 Tecumseh Products Company  
All rights reserved