



Compressor  
Voltage Code : FZ

CAJ9513T-FZ

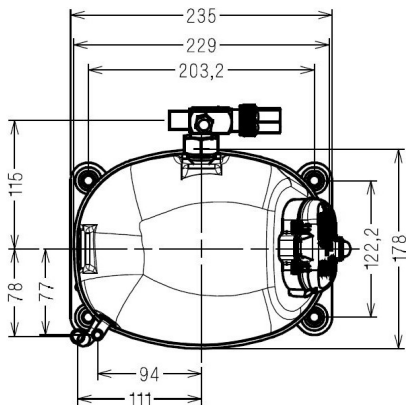
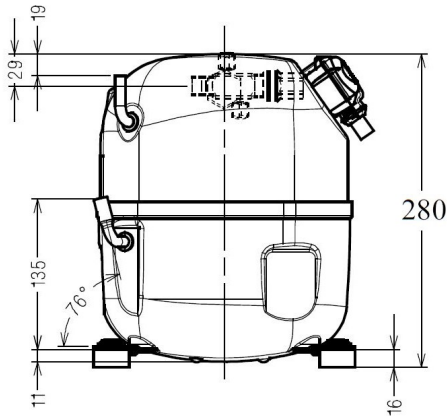
High Temp. Commercial (MHP)

220 - 240V 1~ 50 Hz

R22

AJK513T-FZ3C

Conditions	Frequency	Nominal Cooling Capacity		Sound Power ISO3745 / ISO 3743-1
		Watts	BTU/h	
EN12900_MHP / R22	50 Hz	1716	5852	



<b>Displacement (cc)</b>	24,2
<b>Net Weight (Kg)</b>	22.0
<b>Oil Quantity (cc)</b>	475.0
<b>Oil Type</b>	Synthetic_Alkylate
<b>Expansion Device</b>	Capillary_Tube/Expansion_Valve
<b>Cooling</b>	Fan
<b>Main Winding (Ohm)</b>	1.9
<b>Start Winding (Ohm)</b>	6.03
<b>Current</b>	
RLA (A)	6
MCC (A)	9.6
LRA (A)	33
<b>Electrical Equipment</b>	CSR
<b>Overload</b>	MST18AIW
Time Check	2.8s - 5.2s / 29 A
Open Temp	135° C
Close Temp	61° C
Optional	T0610
<b>Start Capacitor</b>	88 µF / 330 V
<b>Run Capacitor</b>	15 µF / 400 V
<b>Potential Relay</b>	RVA3AN**
Pick Up	260/289V
Drop Out	50/110V
Optional	3ARR3*10B*
<b>Refrigerating connection for OD</b>	
Suction Tube	15.9 (5/8")
Discharge Tube	7.9 (5/16")
Process Tube	6.35 (1/4")

\* EN12900\_MHP : T°Cond. 45.0°C / T°Evap. -10.0°C / T°Return gas temp.. 20.0°C  
T°Subcooling. 0.0K

Certificates :



Note : Tecumseh reserves the right to change information contained in this document without notification.



**Tecumseh**

<b>CAJ9513T-FZ</b>	<b>Tension FZ : 220 - 240V 1~ 50 Hz</b>
--------------------	---

Les performances sont données dans les <b>conditions EN12900_MHP</b> :	Gaz aspirés :	20.0 °C
Condition Dew	Sous refroidissement :	0.0 K
The performance data are in <b>EN12900_MHP conditions</b> :	Return gas :	20.0 °C
Dew Condition	Subcooling :	0.0 K

**50 Hz R22**

**N°234JT-FZ**

4   T condensation	5   T évaporation	(°C)	-20	-15	-10	-5	0	5	10	15
<b>40</b>	1   P frigorifique	(Watt)	1129	1466	1867	2340	2895	3544	4295	5159
	2   P absorbée	(W)	700	781	855	923	984	1037	1082	1119
	3   I absorbée	(A)	3.74	4.07	4.38	4.66	4.92	5.16	5.37	5.56
<b>50</b>	1   P frigorifique	(Watt)	920	1217	1565	1974	2453	3013	3663	4415
	2   P absorbée	(W)	731	833	929	1020	1104	1182	1253	1317
	3   I absorbée	(A)	3.83	4.27	4.69	5.09	5.46	5.81	6.13	6.44
<b>60</b>	1   P frigorifique	(Watt)		970	1266	1611	2014	2487	3038	3678
	2   P absorbée	(W)		872	992	1107	1217	1322	1420	1512
	3   I absorbée	(A)		4.46	4.99	5.50	5.98	6.45	6.88	7.30

© 2021 Tecumseh Products Company  
All rights reserved

1 = cooling capacity 2 = power input 3 = current 4 = condensing temperature 5 = evaporating temperature

**Nota : Tecumseh se réserve le droit de modifier les informations contenues dans ce document sans préavis.**

**Note : Tecumseh reserves the right to change information contained in this document without notification.**