



Compressor
Voltage Code : TZ

TFH4522F

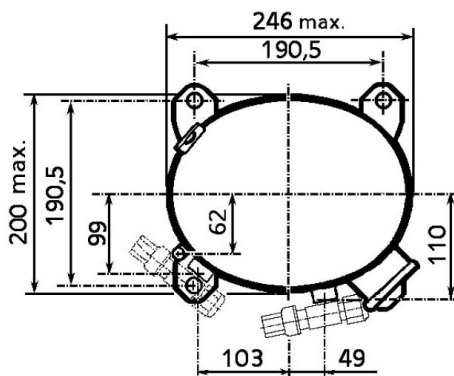
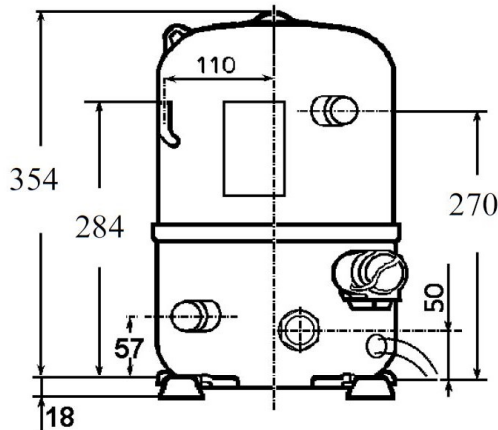
High Temp. Commercial (HP)

400V 3~ 50Hz / 440V 3~ 60 Hz

R22

AHC4522ETZ

Conditions	Frequency	Nominal Cooling Capacity		Sound Power ISO3745 / ISO 3743-1
		Watts	BTU/h	
EN12900_HP / R22	50 Hz / 60 Hz	4829 / 5685	16468 / 19384	67 dBA



Displacement (cc)	39,95
Net Weight (Kg)	30.0
Oil Quantity (cc)	1330.0
Oil Type	Mineral
Expansion Device	Capillary_Tube/Expansion_Valve
Cooling	Fan
Main Winding (Ohm)	6.3
Current	
RLA (A)	3.7 3.9
MCC (A)	4.6 5
LRA (A)	24 26
Electrical Equipment	TRI
Overload	Interne
Refrigerating connection for OD	
Suction Tube	15.9 (5/8")
Discharge Tube	12.7 (1/2")
Process Tube	6.35 (1/4")

* EN12900_HP : T°Cond. 50.0°C / T°Evap. 5.0°C / T°Return gas temp.. 20.0°C
T°Subcooling. 0.0K

Certificates :



Note : Tecumseh reserves the right to change information contained in this document without notification.



Tecumseh

TFH4522F	Tension TZ : 400V 3~ 50Hz / 440V 3~ 60 Hz
-----------------	--

Les performances sont données dans les conditions EN12900_HP :	Gaz aspirés :	20.0 °C
Condition Dew	Sous refroidissement :	0.0 K
The performance data are in EN12900_HP conditions :	Return gas :	20.0 °C
Dew Condition	Subcooling :	0.0 K

50 Hz R22										
N°236CU-T										
4 T condensation	5 T évaporation	(°C)	-20	-15	-10	-5	0	5	10	15
40	1 P frigorifique	(Watt)	1644	2210	2903	3719	4655	5705	6867	8136
	2 P absorbée	(W)	1101	1228	1347	1458	1562	1658	1747	1828
	3 I absorbée	(A)	2.78	2.89	2.99	3.09	3.18	3.27	3.36	3.45
50	1 P frigorifique	(Watt)	1283	1775	2379	3092	3911	4829	5845	6951
	2 P absorbée	(W)	1036	1216	1384	1541	1687	1821	1943	2054
	3 I absorbée	(A)	2.63	2.82	3.01	3.19	3.36	3.53	3.69	3.84
60	1 P frigorifique	(Watt)		1311	1837	2457	3167	3964	4842	5795
	2 P absorbée	(W)		1203	1421	1625	1812	1985	2142	2283
	3 I absorbée	(A)		2.77	3.04	3.30	3.55	3.79	4.02	4.23

60 Hz R22										
N°236CU-T										
4 T condensation	5 T évaporation	(°C)	-20	-15	-10	-5	0	5	10	15
40	1 P frigorifique	(Watt)	1955	2632	3451	4407	5497	6715	8058	9520
	2 P absorbée	(W)	1230	1414	1586	1746	1895	2032	2158	2271
	3 I absorbée	(A)	2.53	2.70	2.87	3.02	3.18	3.32	3.46	3.60
50	1 P frigorifique	(Watt)	1523	2112	2827	3664	4618	5685	6859	8135
	2 P absorbée	(W)	1153	1400	1631	1846	2047	2232	2401	2555
	3 I absorbée	(A)	2.39	2.64	2.89	3.12	3.36	3.58	3.80	4.01
60	1 P frigorifique	(Watt)		1559	2181	2910	3740	4666	5682	6784
	2 P absorbée	(W)		1384	1675	1947	2199	2433	2647	2842
	3 I absorbée	(A)		2.59	2.91	3.23	3.54	3.84	4.14	4.42

1 = cooling capacity 2 = power input 3 = current 4 = condensing temperature 5 = evaporating temperature

Nota : Tecumseh se réserve le droit de modifier les informations contenues dans ce document sans préavis.
Note : Tecumseh reserves the right to change information contained in this document without notification.

© 2021 Tecumseh Products Company
All rights reserved