



Compressor  
Voltage Code : TZ

TAJ4519T-TZ

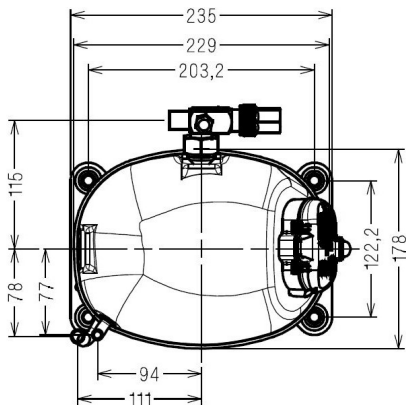
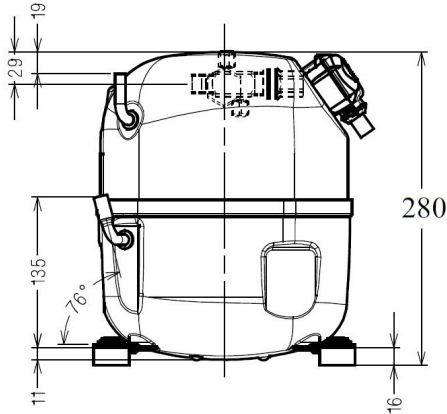
High Temp. Commercial (HP)

400V 3~ 50Hz / 440V 3~ 60 Hz

R22

AJ4519T-TZ1C

Conditions	Frequency	Nominal Cooling Capacity		Sound Power ISO3745 / ISO 3743-1
		Watts	BTU/h	
EN12900_MHP / R22	50 Hz / 60 Hz	2768 / 3326	9438 / 11343	70 dBA



<b>Displacement (cc)</b>	34,5
<b>Net Weight (Kg)</b>	20.2
<b>Oil Quantity (cc)</b>	475.0
<b>Oil Type</b>	Mineral
<b>Expansion Device</b>	Capillary_Tube/Expansion_Valve
<b>Cooling</b>	Fan
<b>Main Winding (Ohm)</b>	8.7
<b>Current</b>	
RLA (A)	3.5   3.6
MCC (A)	4.2   4.2
LRA (A)	22   23
<b>Electrical Equipment</b>	TRI
<b>Overload</b>	Interne
<b>Refrigerating connection for OD</b>	
Suction Tube	15.9 (5/8")
Discharge Tube	9.5 (3/8")
Process Tube	6.35 (1/4")

\* EN12900\_MHP : T°Cond. 45.0°C / T°Evap. -10.0°C / T°Return gas temp.. 20.0°C  
T°Subcooling. 0.0K

Certificates :



Note : Tecumseh reserves the right to change information contained in this document without notification.



**Tecumseh**

<b>TAJ4519T-TZ</b>	<b>Tension TZ : 400V 3~ 50Hz / 440V 3~ 60 Hz</b>
--------------------	--

Les performances sont données dans les <b>conditions EN12900_MHP</b> :	Gaz aspirés :	20.0 °C
Condition Dew	Sous refroidissement :	0.0 K
The performance data are in <b>EN12900_MHP conditions</b> :	Return gas :	20.0 °C
Dew Condition	Subcooling :	0.0 K

**50 Hz R22**

**N°234SU-TZ**

4   T condensation	5   T évaporation	(°C)	-20	-15	-10	-5	0	5	10	15
<b>40</b>	1   P frigorifique	(Watt)	1971	2462	3039	3700	4441	5260	6155	7121
	2   P absorbée	(W)	1240	1303	1370	1440	1514	1590	1671	1754
	3   I absorbée	(A)	2.47	2.54	2.61	2.69	2.78	2.87	2.97	3.08
<b>50</b>	1   P frigorifique	(Watt)	1535	1975	2489	3076	3731	4453	5238	6083
	2   P absorbée	(W)	1174	1291	1407	1522	1635	1748	1858	1968
	3   I absorbée	(A)	2.34	2.48	2.63	2.78	2.94	3.10	3.26	3.43
<b>60</b>	1   P frigorifique	(Watt)		1462	1922	2443	3022	3655	4339	5071
	2   P absorbée	(W)		1278	1444	1604	1758	1906	2048	2184
	3   I absorbée	(A)		2.44	2.66	2.88	3.10	3.33	3.55	3.77

**60 Hz R22**

**N°234SU-TZ**

4   T condensation	5   T évaporation	(°C)	-20	-15	-10	-5	0	5	10	15
<b>40</b>	1   P frigorifique	(Watt)	2513	3024	3653	4398	5254	6218	7285	8453
	2   P absorbée	(W)	1369	1513	1653	1788	1919	2045	2165	2281
	3   I absorbée	(A)	2.29	2.48	2.66	2.83	3.00	3.17	3.33	3.48
<b>50</b>	1   P frigorifique	(Watt)	1961	2425	2991	3655	4414	5264	6200	7219
	2   P absorbée	(W)	1289	1499	1699	1890	2073	2245	2409	2563
	3   I absorbée	(A)	2.16	2.42	2.68	2.93	3.17	3.41	3.65	3.88
<b>60</b>	1   P frigorifique	(Watt)		1796	2309	2904	3575	4321	5135	6014
	2   P absorbée	(W)		1482	1744	1993	2227	2448	2655	2849
	3   I absorbée	(A)		2.37	2.70	3.03	3.35	3.66	3.97	4.28

1 = cooling capacity 2 = power input 3 = current 4 = condensing temperature 5 = evaporating temperature

**Nota : Tecumseh se réserve le droit de modifier les informations contenues dans ce document sans préavis.**  
**Note : Tecumseh reserves the right to change information contained in this document without notification.**

© 2021 Tecumseh Products Company  
All rights reserved