



Compressor  
Voltage Code : FZ

# AE4450Z-FZ1A

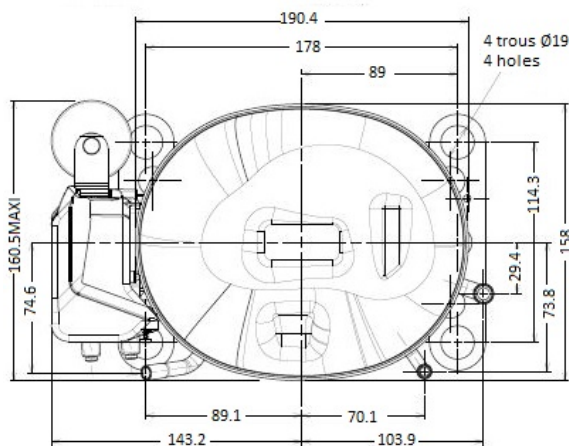
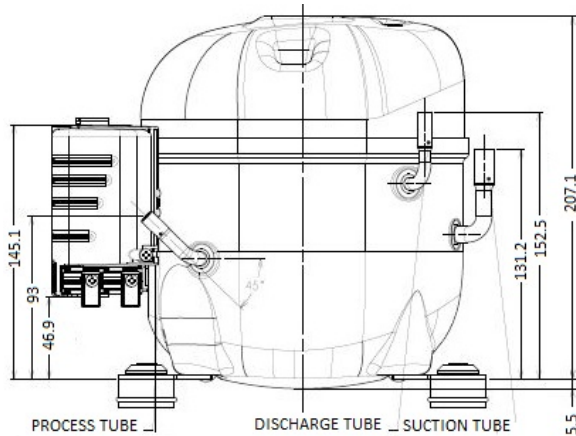
High Temp. Commercial (HP)

220 - 240V 1~ 50 Hz

R452A / R404A / R448A / R449A

AE4450Z-FZ1A

| Conditions         | Frequency | Nominal Cooling Capacity |       | Sound Power<br>ISO3745 / ISO 3743-1 |
|--------------------|-----------|--------------------------|-------|-------------------------------------|
|                    |           | Watts                    | BTU/h |                                     |
| EN12900_HP / R452A | 50 Hz     | 1153                     | 3933  | 59 dBA                              |
| EN12900_HP / R404A | 50 Hz     | 1151                     | 3923  | 59 dBA                              |
| EN12900_HP / R448A | 50 Hz     | 1154                     | 3937  | 59 dBA                              |
| EN12900_HP / R449A | 50 Hz     | 1154                     | 3937  | 59 dBA                              |



\* EN12900\_HP : T°Cond. 50.0°C / T°Evap. 5.0°C / T°Return gas temp.. 20.0°C  
T°Subcooling. 0.0K

Certificates :



|                                        |                                |
|----------------------------------------|--------------------------------|
| <b>Displacement (cc)</b>               | 8,85                           |
| <b>Net Weight (Kg)</b>                 | 10.7                           |
| <b>Oil Quantity (cc)</b>               | 380.0                          |
| <b>Oil Type</b>                        | Polyolester                    |
| <b>Expansion Device</b>                | Capillary_Tube/Expansion_Valve |
| <b>Cooling</b>                         | Fan                            |
| <b>Main Winding (Ohm)</b>              | 5.74                           |
| <b>Start Winding (Ohm)</b>             | 25.41                          |
| <b>Current</b>                         |                                |
| RLA (A)                                | 3.5                            |
| LRA (A)                                | 17.5                           |
| <b>Electrical Equipment</b>            |                                |
|                                        | CSIR                           |
| <b>Overload</b>                        |                                |
| T1419                                  |                                |
| Time Check                             | 6.5s - 16s / 10.7 A            |
| Open Temp                              | 140° C                         |
| Close Temp                             | 52° C                          |
| <b>Start Capacitor</b>                 |                                |
|                                        | 88 µF / 250 V                  |
| <b>Current Relay</b>                   |                                |
|                                        | RP49**                         |
| Pick Up                                | 8.20A                          |
| Drop Out                               | 7.00A                          |
| <b>Refrigerating connection for OD</b> |                                |
| Suction Tube                           | 9.5 (3/8")                     |
| Discharge Tube                         | 6.35 (1/4")                    |
| Process Tube                           | 6.35 (1/4")                    |

Note : Tecumseh reserves the right to change information contained in this document without notification.



**Tecumseh**

|                     |                                         |
|---------------------|-----------------------------------------|
| <b>AE4450Z-FZ1A</b> | <b>Tension FZ : 220 - 240V 1~ 50 Hz</b> |
|---------------------|-----------------------------------------|

|                                                                       |                        |         |
|-----------------------------------------------------------------------|------------------------|---------|
| Les performances sont données dans les <b>conditions EN12900_HP</b> : | Gaz aspirés :          | 20.0 °C |
| Condition Dew                                                         | Sous refroidissement : | 0.0 K   |
| The performance data are in <b>EN12900_HP conditions</b> :            | Return gas :           | 20.0 °C |
| Dew Condition                                                         | Subcooling :           | 0.0 K   |

© 2021 Tecumseh Products Company  
All rights reserved

### 50 Hz R452A

**N°3095**

| 4   T condensation | 5   T évaporation  | (°C)   | -25  | -20  | -15  | -10  | -5   | 0    | 5    | 10   | 15   |
|--------------------|--------------------|--------|------|------|------|------|------|------|------|------|------|
| <b>30</b>          | 1   P frigorifique | (Watt) | 443  | 574  | 729  | 913  | 1128 | 1378 | 1666 | 1997 | 2373 |
|                    | 2   P absorbée     | (W)    | 283  | 316  | 343  | 366  | 385  | 401  | 413  | 422  | 429  |
|                    | 3   I absorbée     | (A)    | 2.21 | 2.31 | 2.40 | 2.48 | 2.54 | 2.60 | 2.64 | 2.68 | 2.70 |
| <b>40</b>          | 1   P frigorifique | (Watt) |      | 476  | 614  | 773  | 957  | 1169 | 1413 | 1693 | 2012 |
|                    | 2   P absorbée     | (W)    |      | 334  | 372  | 406  | 436  | 462  | 484  | 502  | 518  |
|                    | 3   I absorbée     | (A)    |      | 2.33 | 2.46 | 2.59 | 2.71 | 2.81 | 2.91 | 2.99 | 3.07 |
| <b>50</b>          | 1   P frigorifique | (Watt) |      |      | 492  | 626  | 779  | 954  | 1153 | 1382 | 1643 |
|                    | 2   P absorbée     | (W)    |      |      | 393  | 440  | 482  | 520  | 553  | 584  | 611  |
|                    | 3   I absorbée     | (A)    |      |      | 2.52 | 2.70 | 2.87 | 3.02 | 3.17 | 3.31 | 3.43 |
| <b>60</b>          | 1   P frigorifique | (Watt) |      |      |      | 472  | 594  | 731  | 886  | 1064 | 1267 |
|                    | 2   P absorbée     | (W)    |      |      |      | 469  | 525  | 577  | 624  | 668  | 708  |
|                    | 3   I absorbée     | (A)    |      |      |      | 2.81 | 3.03 | 3.24 | 3.43 | 3.62 | 3.80 |

### 50 Hz R404A

**N°3093**

| 4   T condensation | 5   T évaporation  | (°C)   | -25  | -20  | -15  | -10  | -5   | 0    | 5    | 10   | 15   |
|--------------------|--------------------|--------|------|------|------|------|------|------|------|------|------|
| <b>30</b>          | 1   P frigorifique | (Watt) | 472  | 605  | 762  | 946  | 1160 | 1409 | 1694 | 2021 | 2391 |
|                    | 2   P absorbée     | (W)    | 300  | 333  | 361  | 384  | 402  | 417  | 428  | 436  | 441  |
|                    | 3   I absorbée     | (A)    | 2.35 | 2.44 | 2.52 | 2.59 | 2.65 | 2.70 | 2.74 | 2.77 | 2.78 |
| <b>40</b>          | 1   P frigorifique | (Watt) | 380  | 501  | 639  | 797  | 978  | 1187 | 1425 | 1697 | 2006 |
|                    | 2   P absorbée     | (W)    | 309  | 354  | 393  | 426  | 456  | 480  | 501  | 518  | 532  |
|                    | 3   I absorbée     | (A)    | 2.32 | 2.47 | 2.60 | 2.72 | 2.83 | 2.93 | 3.01 | 3.09 | 3.15 |
| <b>50</b>          | 1   P frigorifique | (Watt) |      | 391  | 510  | 642  | 791  | 959  | 1151 | 1369 | 1617 |
|                    | 2   P absorbée     | (W)    |      | 365  | 417  | 463  | 504  | 541  | 573  | 601  | 626  |
|                    | 3   I absorbée     | (A)    |      | 2.49 | 2.67 | 2.84 | 3.00 | 3.15 | 3.28 | 3.41 | 3.52 |
| <b>60</b>          | 1   P frigorifique | (Watt) |      |      | 375  | 481  | 597  | 725  | 870  | 1035 | 1222 |
|                    | 2   P absorbée     | (W)    |      |      | 436  | 497  | 552  | 602  | 647  | 688  | 725  |
|                    | 3   I absorbée     | (A)    |      |      | 2.75 | 2.97 | 3.18 | 3.37 | 3.56 | 3.73 | 3.89 |

1 = cooling capacity 2 = power input 3 = current 4 = condensing temperature 5 = evaporating temperature

**Nota : Tecumseh se réserve le droit de modifier les informations contenues dans ce document sans préavis.**

**Note : Tecumseh reserves the right to change information contained in this document without notification.**



**Tecumseh**

|                     |                                         |
|---------------------|-----------------------------------------|
| <b>AE4450Z-FZ1A</b> | <b>Tension FZ : 220 - 240V 1~ 50 Hz</b> |
|---------------------|-----------------------------------------|

|                                                                       |                        |         |
|-----------------------------------------------------------------------|------------------------|---------|
| Les performances sont données dans les <b>conditions EN12900_HP</b> : | Gaz aspirés :          | 20.0 °C |
| Condition Dew                                                         | Sous refroidissement : | 0.0 K   |
| The performance data are in <b>EN12900_HP conditions</b> :            | Return gas :           | 20.0 °C |
| Dew Condition                                                         | Subcooling :           | 0.0 K   |

| <b>50 Hz R448A (*)</b> |                    |        |      |      |      |      |      |      |      |      |               |
|------------------------|--------------------|--------|------|------|------|------|------|------|------|------|---------------|
|                        |                    |        |      |      |      |      |      |      |      |      | <b>N°3094</b> |
| 4   T condensation     | 5   T évaporation  | (°C)   | -25  | -20  | -15  | -10  | -5   | 0    | 5    | 10   | 15            |
| <b>30</b>              | 1   P frigorifique | (Watt) | 390  | 518  | 671  | 852  | 1065 | 1315 | 1605 | 1939 | 2321          |
|                        | 2   P absorbée     | (W)    | 264  | 294  | 320  | 342  | 361  | 376  | 388  | 397  | 403           |
|                        | 3   I absorbée     | (A)    | 2.06 | 2.15 | 2.24 | 2.31 | 2.38 | 2.44 | 2.49 | 2.52 | 2.54          |
| <b>40</b>              | 1   P frigorifique | (Watt) |      | 432  | 569  | 728  | 914  | 1130 | 1380 | 1669 | 2000          |
|                        | 2   P absorbée     | (W)    |      | 313  | 349  | 382  | 410  | 435  | 456  | 474  | 488           |
|                        | 3   I absorbée     | (A)    |      | 2.18 | 2.31 | 2.43 | 2.55 | 2.65 | 2.74 | 2.82 | 2.89          |
| <b>50</b>              | 1   P frigorifique | (Watt) |      |      | 463  | 601  | 760  | 943  | 1154 | 1398 | 1678          |
|                        | 2   P absorbée     | (W)    |      |      | 371  | 416  | 457  | 494  | 527  | 556  | 582           |
|                        | 3   I absorbée     | (A)    |      |      | 2.38 | 2.56 | 2.72 | 2.87 | 3.02 | 3.15 | 3.27          |
| <b>60</b>              | 1   P frigorifique | (Watt) |      |      |      | 473  | 605  | 756  | 929  | 1129 | 1359          |
|                        | 2   P absorbée     | (W)    |      |      |      | 447  | 502  | 554  | 601  | 644  | 684           |
|                        | 3   I absorbée     | (A)    |      |      |      | 2.67 | 2.89 | 3.10 | 3.31 | 3.50 | 3.68          |

| <b>50 Hz R449A (*)</b> |                    |        |      |      |      |      |      |      |      |      |               |
|------------------------|--------------------|--------|------|------|------|------|------|------|------|------|---------------|
|                        |                    |        |      |      |      |      |      |      |      |      | <b>N°3096</b> |
| 4   T condensation     | 5   T évaporation  | (°C)   | -25  | -20  | -15  | -10  | -5   | 0    | 5    | 10   | 15            |
| <b>30</b>              | 1   P frigorifique | (Watt) | 390  | 518  | 671  | 852  | 1065 | 1315 | 1605 | 1939 | 2321          |
|                        | 2   P absorbée     | (W)    | 264  | 294  | 320  | 342  | 361  | 376  | 388  | 397  | 403           |
|                        | 3   I absorbée     | (A)    | 2.06 | 2.15 | 2.24 | 2.31 | 2.38 | 2.44 | 2.49 | 2.52 | 2.54          |
| <b>40</b>              | 1   P frigorifique | (Watt) |      | 432  | 569  | 728  | 914  | 1130 | 1380 | 1669 | 2000          |
|                        | 2   P absorbée     | (W)    |      | 313  | 349  | 382  | 410  | 435  | 456  | 474  | 488           |
|                        | 3   I absorbée     | (A)    |      | 2.18 | 2.31 | 2.43 | 2.55 | 2.65 | 2.74 | 2.82 | 2.89          |
| <b>50</b>              | 1   P frigorifique | (Watt) |      |      | 463  | 601  | 760  | 943  | 1154 | 1398 | 1678          |
|                        | 2   P absorbée     | (W)    |      |      | 371  | 416  | 457  | 494  | 527  | 556  | 582           |
|                        | 3   I absorbée     | (A)    |      |      | 2.38 | 2.56 | 2.72 | 2.87 | 3.02 | 3.15 | 3.27          |
| <b>60</b>              | 1   P frigorifique | (Watt) |      |      |      | 473  | 605  | 756  | 929  | 1129 | 1359          |
|                        | 2   P absorbée     | (W)    |      |      |      | 447  | 502  | 554  | 601  | 644  | 684           |
|                        | 3   I absorbée     | (A)    |      |      |      | 2.67 | 2.89 | 3.10 | 3.31 | 3.50 | 3.68          |

**1 = cooling capacity 2 = power input 3 = current 4 = condensing temperature 5 = evaporating temperature**

(\*) Veuillez vous référer strictement aux Recommandations d'Utilisation et Bulletins Marketing Tecumseh du fait de la température de reflux élevée pour les applications LBP.  
 (\*) Due to very high discharge temperature especially on LBP conditions, please strictly refer to Tecumseh Guidelines & Marketing Bulletin when using this refrigerant.

**Nota : Tecumseh se réserve le droit de modifier les informations contenues dans ce document sans préavis.**

**Note : Tecumseh reserves the right to change information contained in this document without notification.**

© 2021 Tecumseh Products Company  
All rights reserved