



Compressor
Voltage Code : TZ

TAG4573Z

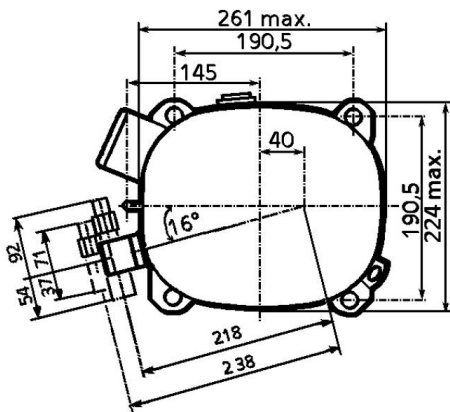
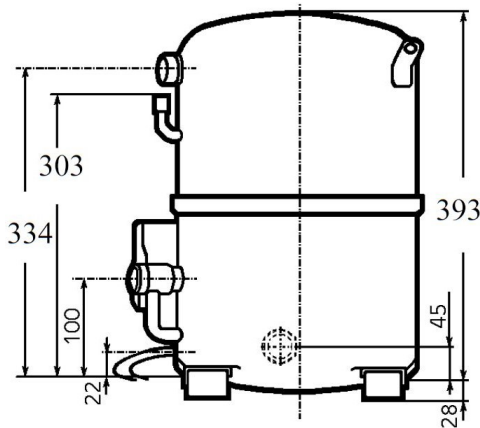
High Temp. Commercial (HP)

400V 3~ 50Hz / 440V 3~ 60 Hz

R452A / R404A / R448A / R449A

AGB4573ZTZ

| Conditions | Frequency | Nominal Cooling Capacity | | Sound Power ISO3745 / ISO 3743-1 |
|---------------------|---------------|--------------------------|---------------|-------------------------------------|
| | | Watts | BTU/h | |
| EN12900_MHP / R452A | 50 Hz / 60 Hz | 8902 / 11028 | 30357 / 37606 | 81 dBA |
| EN12900_MHP / R404A | 50 Hz / 60 Hz | 9156 / 11343 | 31223 / 38679 | 81 dBA |
| EN12900_MHP / R448A | 50 Hz / 60 Hz | 8451 / 10469 | 28817 / 35700 | 81 dBA |
| EN12900_MHP / R449A | 50 Hz / 60 Hz | 8451 / 10469 | 28817 / 35700 | 81 dBA |



| | |
|--|--------------------------------|
| Displacement (cc) | 134,8 |
| Net Weight (Kg) | 48.0 |
| Oil Quantity (cc) | 1760.0 |
| Oil Type | Polyolester |
| Expansion Device | Capillary_Tube/Expansion_Valve |
| Cooling | Fan |
| Main Winding (Ohm) | 2.2 |
| Current | |
| RLA (A) | 11.4 13.2 |
| MCC (A) | 19 18.3 |
| LRA (A) | 56 61 |
| Electrical Equipment | TRI |
| Overload | Interne |
| Refrigerating connection for OD | |
| Suction Tube | 28.6 (1"1/8) |
| Discharge Tube | 15.9 (5/8") |
| Process Tube | 6.35 (1/4") |

* EN12900_MHP : T°Cond. 45.0°C / T°Evap. -10.0°C / T°Return gas temp.. 20.0°C
T°Subcooling. 0.0K

Certificates :



Note : Tecumseh reserves the right to change information contained in this document without notification.



Tecumseh

| | |
|-----------------|--|
| TAG4573Z | Tension TZ : 400V 3~ 50Hz / 440V 3~ 60 Hz |
|-----------------|--|

| | | |
|--|------------------------|---------|
| Les performances sont données dans les conditions EN12900_MHP : | Gaz aspirés : | 20.0 °C |
| Condition Dew | Sous refroidissement : | 0.0 K |
| The performance data are in EN12900_MHP conditions : | Return gas : | 20.0 °C |
| Dew Condition | Subcooling : | 0.0 K |

© 2021 Tecumseh Products Company
All rights reserved

50 Hz R452A

N°2154

| 4 T condensation | 5 T évaporation | (°C) | -25 | -20 | -15 | -10 | -5 | 0 | 5 | 10 | 15 |
|--------------------|--------------------|--------|------|------|------|-------|-------|-------|-------|-------|-------|
| 30 | 1 P frigorifique | (Watt) | 5527 | 7318 | 9456 | 11992 | 14976 | 18461 | 22497 | 27136 | 32427 |
| | 2 P absorbée | (W) | 2850 | 3295 | 3742 | 4192 | 4645 | 5099 | 5554 | 6011 | 6469 |
| | 3 I absorbée | (A) | 5.42 | 6.01 | 6.63 | 7.26 | 7.92 | 8.61 | 9.33 | 10.1 | 10.8 |
| 40 | 1 P frigorifique | (Watt) | | 5852 | 7751 | 9975 | 12574 | 15598 | 19101 | 23131 | 27741 |
| | 2 P absorbée | (W) | | 3362 | 3893 | 4431 | 4976 | 5528 | 6086 | 6651 | 7221 |
| | 3 I absorbée | (A) | | 6.13 | 6.86 | 7.62 | 8.41 | 9.22 | 10.1 | 10.9 | 11.8 |
| 50 | 1 P frigorifique | (Watt) | | | 5931 | 7801 | 9973 | 12496 | 15423 | 18805 | 22692 |
| | 2 P absorbée | (W) | | | 3902 | 4528 | 5165 | 5815 | 6475 | 7146 | 7828 |
| | 3 I absorbée | (A) | | | 6.90 | 7.78 | 8.70 | 9.64 | 10.6 | 11.6 | 12.6 |
| 60 | 1 P frigorifique | (Watt) | | | | 5558 | 7261 | 9243 | 11554 | 14246 | 17369 |
| | 2 P absorbée | (W) | | | | 4464 | 5194 | 5939 | 6701 | 7479 | 8272 |
| | 3 I absorbée | (A) | | | | 7.73 | 8.78 | 9.85 | 10.9 | 12.1 | 13.2 |

60 Hz R452A

N°2154

| 4 T condensation | 5 T évaporation | (°C) | -25 | -20 | -15 | -10 | -5 | 0 | 5 | 10 | 15 |
|--------------------|--------------------|--------|------|------|-------|-------|-------|-------|-------|-------|-------|
| 30 | 1 P frigorifique | (Watt) | 6949 | 9081 | 11608 | 14590 | 18085 | 22152 | 26852 | 32242 | 38383 |
| | 2 P absorbée | (W) | 3693 | 4268 | 4851 | 5439 | 6027 | 6614 | 7194 | 7766 | 8325 |
| | 3 I absorbée | (A) | 6.01 | 6.83 | 7.65 | 8.46 | 9.26 | 10.1 | 10.9 | 11.7 | 12.4 |
| 40 | 1 P frigorifique | (Watt) | | 7398 | 9637 | 12233 | 15246 | 18736 | 22760 | 27378 | 32650 |
| | 2 P absorbée | (W) | | 4351 | 5022 | 5712 | 6418 | 7137 | 7865 | 8599 | 9335 |
| | 3 I absorbée | (A) | | 6.94 | 7.94 | 8.93 | 9.91 | 10.9 | 11.9 | 12.9 | 13.8 |
| 50 | 1 P frigorifique | (Watt) | | | 7612 | 9808 | 12324 | 15219 | 18553 | 22384 | 26772 |
| | 2 P absorbée | (W) | | | 5099 | 5867 | 6664 | 7490 | 8339 | 9209 | 10096 |
| | 3 I absorbée | (A) | | | 7.93 | 9.10 | 10.3 | 11.4 | 12.6 | 13.8 | 14.9 |
| 60 | 1 P frigorifique | (Watt) | | | | 7329 | 9332 | 11618 | 14246 | 17274 | 20763 |
| | 2 P absorbée | (W) | | | | 5964 | 6827 | 7733 | 8677 | 9657 | 10670 |
| | 3 I absorbée | (A) | | | | 8.97 | 10.3 | 11.7 | 13.0 | 14.4 | 15.7 |

1 = cooling capacity 2 = power input 3 = current 4 = condensing temperature 5 = evaporating temperature

Nota : Tecumseh se réserve le droit de modifier les informations contenues dans ce document sans préavis.

Note : Tecumseh reserves the right to change information contained in this document without notification.



Tecumseh

| | |
|-----------------|--|
| TAG4573Z | Tension TZ : 400V 3~ 50Hz / 440V 3~ 60 Hz |
|-----------------|--|

| | | |
|--|------------------------|---------|
| Les performances sont données dans les conditions EN12900_MHP : | Gaz aspirés : | 20.0 °C |
| Condition Dew | Sous refroidissement : | 0.0 K |
| The performance data are in EN12900_MHP conditions : | Return gas : | 20.0 °C |
| Dew Condition | Subcooling : | 0.0 K |

© 2021 Tecumseh Products Company
All rights reserved

50 Hz R404A

N°227LU-T

| 4 T condensation | 5 T évaporation | (°C) | -25 | -20 | -15 | -10 | -5 | 0 | 5 | 10 | 15 |
|--------------------|--------------------|--------|------|------|------|-------|-------|-------|-------|-------|-------|
| 30 | 1 P frigorifique | (Watt) | 5894 | 7716 | 9878 | 12427 | 15413 | 18882 | 22883 | 27462 | 32667 |
| | 2 P absorbée | (W) | 3020 | 3477 | 3935 | 4393 | 4850 | 5306 | 5759 | 6207 | 6651 |
| | 3 I absorbée | (A) | 5.74 | 6.35 | 6.97 | 7.61 | 8.28 | 8.96 | 9.67 | 10.4 | 11.2 |
| 40 | 1 P frigorifique | (Watt) | 4516 | 6163 | 8071 | 10288 | 12861 | 15837 | 19265 | 23192 | 27667 |
| | 2 P absorbée | (W) | 3027 | 3563 | 4104 | 4650 | 5200 | 5752 | 6306 | 6861 | 7415 |
| | 3 I absorbée | (A) | 5.77 | 6.49 | 7.24 | 8.00 | 8.79 | 9.60 | 10.4 | 11.3 | 12.2 |
| 50 | 1 P frigorifique | (Watt) | | 4539 | 6155 | 8000 | 10122 | 12567 | 15385 | 18622 | 22327 |
| | 2 P absorbée | (W) | | 3512 | 4134 | 4766 | 5406 | 6053 | 6706 | 7364 | 8027 |
| | 3 I absorbée | (A) | | 6.44 | 7.31 | 8.19 | 9.10 | 10.0 | 11.0 | 12.0 | 13.0 |
| 60 | 1 P frigorifique | (Watt) | | | 4232 | 5667 | 7299 | 9175 | 11344 | 13853 | 16750 |
| | 2 P absorbée | (W) | | | 4010 | 4725 | 5453 | 6193 | 6943 | 7703 | 8471 |
| | 3 I absorbée | (A) | | | 7.18 | 8.19 | 9.22 | 10.3 | 11.3 | 12.4 | 13.6 |

60 Hz R404A

N°227LU-T

| 4 T condensation | 5 T évaporation | (°C) | -25 | -20 | -15 | -10 | -5 | 0 | 5 | 10 | 15 |
|--------------------|--------------------|--------|------|------|-------|-------|-------|-------|-------|-------|-------|
| 30 | 1 P frigorifique | (Watt) | 7410 | 9574 | 12126 | 15120 | 18612 | 22657 | 27312 | 32630 | 38669 |
| | 2 P absorbée | (W) | 3912 | 4504 | 5101 | 5699 | 6294 | 6882 | 7459 | 8020 | 8561 |
| | 3 I absorbée | (A) | 6.37 | 7.21 | 8.04 | 8.86 | 9.67 | 10.5 | 11.3 | 12.0 | 12.8 |
| 40 | 1 P frigorifique | (Watt) | 5835 | 7793 | 10035 | 12617 | 15594 | 19022 | 22956 | 27451 | 32563 |
| | 2 P absorbée | (W) | 3946 | 4611 | 5295 | 5996 | 6707 | 7427 | 8149 | 8871 | 9587 |
| | 3 I absorbée | (A) | 6.34 | 7.36 | 8.37 | 9.37 | 10.4 | 11.3 | 12.3 | 13.3 | 14.2 |
| 50 | 1 P frigorifique | (Watt) | | 5981 | 7901 | 10059 | 12508 | 15306 | 18507 | 22166 | 26339 |
| | 2 P absorbée | (W) | | 4659 | 5402 | 6176 | 6975 | 7797 | 8636 | 9489 | 10352 |
| | 3 I absorbée | (A) | | 7.21 | 8.40 | 9.58 | 10.8 | 11.9 | 13.1 | 14.2 | 15.3 |
| 60 | 1 P frigorifique | (Watt) | | | 5751 | 7471 | 9380 | 11534 | 13989 | 16800 | 20022 |
| | 2 P absorbée | (W) | | | 5493 | 6310 | 7169 | 8064 | 8991 | 9947 | 10927 |
| | 3 I absorbée | (A) | | | 8.13 | 9.49 | 10.8 | 12.2 | 13.5 | 14.8 | 16.1 |

1 = cooling capacity 2 = power input 3 = current 4 = condensing temperature 5 = evaporating temperature

Nota : Tecumseh se réserve le droit de modifier les informations contenues dans ce document sans préavis.

Note : Tecumseh reserves the right to change information contained in this document without notification.



Tecumseh

| | |
|-----------------|--|
| TAG4573Z | Tension TZ : 400V 3~ 50Hz / 440V 3~ 60 Hz |
|-----------------|--|

| | | |
|--|------------------------|---------|
| Les performances sont données dans les conditions EN12900_MHP : | Gaz aspirés : | 20.0 °C |
| Condition Dew | Sous refroidissement : | 0.0 K |
| The performance data are in EN12900_MHP conditions : | Return gas : | 20.0 °C |
| Dew Condition | Subcooling : | 0.0 K |

| 50 Hz R448A (*) | | | | | | | | | | | |
|------------------------|--------------------|--------|------|------|------|-------|-------|-------|-------|-------|---------------|
| | | | | | | | | | | | N°2877 |
| 4 T condensation | 5 T évaporation | (°C) | -25 | -20 | -15 | -10 | -5 | 0 | 5 | 10 | 15 |
| 30 | 1 P frigorifique | (Watt) | 4868 | 6608 | 8696 | 11189 | 14143 | 17616 | 21665 | 26347 | 31720 |
| | 2 P absorbée | (W) | 2658 | 3066 | 3486 | 3915 | 4351 | 4788 | 5226 | 5660 | 6087 |
| | 3 I absorbée | (A) | 5.06 | 5.60 | 6.17 | 6.78 | 7.42 | 8.09 | 8.78 | 9.48 | 10.2 |
| 40 | 1 P frigorifique | (Watt) | | 5314 | 7185 | 9397 | 12009 | 15075 | 18655 | 22805 | 27581 |
| | 2 P absorbée | (W) | | 3157 | 3652 | 4161 | 4681 | 5208 | 5740 | 6274 | 6806 |
| | 3 I absorbée | (A) | | 5.75 | 6.44 | 7.16 | 7.91 | 8.69 | 9.49 | 10.3 | 11.2 |
| 50 | 1 P frigorifique | (Watt) | | | 5584 | 7488 | 9726 | 12358 | 15439 | 19026 | 23178 |
| | 2 P absorbée | (W) | | | 3686 | 4285 | 4900 | 5528 | 6166 | 6810 | 7457 |
| | 3 I absorbée | (A) | | | 6.52 | 7.37 | 8.25 | 9.16 | 10.1 | 11.1 | 12.0 |
| 60 | 1 P frigorifique | (Watt) | | | | 5566 | 7403 | 9570 | 12123 | 15120 | 18617 |
| | 2 P absorbée | (W) | | | | 4241 | 4962 | 5701 | 6455 | 7220 | 7993 |
| | 3 I absorbée | (A) | | | | 7.35 | 8.38 | 9.45 | 10.5 | 11.7 | 12.8 |

| 60 Hz R448A (*) | | | | | | | | | | | |
|------------------------|--------------------|--------|------|------|-------|-------|-------|-------|-------|-------|---------------|
| | | | | | | | | | | | N°2877 |
| 4 T condensation | 5 T évaporation | (°C) | -25 | -20 | -15 | -10 | -5 | 0 | 5 | 10 | 15 |
| 30 | 1 P frigorifique | (Watt) | 6121 | 8201 | 10676 | 13614 | 17080 | 21140 | 25860 | 31307 | 37545 |
| | 2 P absorbée | (W) | 3444 | 3972 | 4519 | 5080 | 5646 | 6211 | 6769 | 7312 | 7833 |
| | 3 I absorbée | (A) | 5.60 | 6.36 | 7.12 | 7.90 | 8.67 | 9.45 | 10.2 | 11.0 | 11.7 |
| 40 | 1 P frigorifique | (Watt) | | 6715 | 8931 | 11525 | 14562 | 18107 | 22229 | 26991 | 32460 |
| | 2 P absorbée | (W) | | 4085 | 4711 | 5364 | 6037 | 6724 | 7418 | 8112 | 8799 |
| | 3 I absorbée | (A) | | 6.52 | 7.45 | 8.38 | 9.33 | 10.3 | 11.2 | 12.1 | 13.0 |
| 50 | 1 P frigorifique | (Watt) | | | 7168 | 9415 | 12021 | 15051 | 18571 | 22647 | 27346 |
| | 2 P absorbée | (W) | | | 4817 | 5552 | 6322 | 7121 | 7941 | 8775 | 9617 |
| | 3 I absorbée | (A) | | | 7.49 | 8.61 | 9.74 | 10.9 | 12.0 | 13.1 | 14.2 |
| 60 | 1 P frigorifique | (Watt) | | | | 7341 | 9514 | 12026 | 14944 | 18332 | 22258 |
| | 2 P absorbée | (W) | | | | 5666 | 6523 | 7422 | 8358 | 9323 | 10310 |
| | 3 I absorbée | (A) | | | | 8.52 | 9.86 | 11.2 | 12.6 | 13.9 | 15.2 |

1 = cooling capacity 2 = power input 3 = current 4 = condensing temperature 5 = evaporating temperature

(*) Veuillez vous référer strictement aux Recommandations d'Utilisation et Bulletins Marketing Tecumseh du fait de la température de refoulement élevée pour les applications LBP.

(*) Due to very high discharge temperature especially on LBP conditions, please strictly refer to Tecumseh Guidelines & Marketing Bulletin when using this refrigerant.

Nota : Tecumseh se réserve le droit de modifier les informations contenues dans ce document sans préavis.

Note : Tecumseh reserves the right to change information contained in this document without notification.

© 2021 Tecumseh Products Company
All rights reserved



Tecumseh

| | |
|-----------------|--|
| TAG4573Z | Tension TZ : 400V 3~ 50Hz / 440V 3~ 60 Hz |
|-----------------|--|

| | | |
|--|------------------------|---------|
| Les performances sont données dans les conditions EN12900_MHP : | Gaz aspirés : | 20.0 °C |
| Condition Dew | Sous refroidissement : | 0.0 K |
| The performance data are in EN12900_MHP conditions : | Return gas : | 20.0 °C |
| Dew Condition | Subcooling : | 0.0 K |

| 50 Hz R449A (*) | | | | | | | | | | | |
|------------------------|--------------------|--------|------|------|------|-------|-------|-------|-------|-------|---------------|
| | | | | | | | | | | | N°2270 |
| 4 T condensation | 5 T évaporation | (°C) | -25 | -20 | -15 | -10 | -5 | 0 | 5 | 10 | 15 |
| 30 | 1 P frigorifique | (Watt) | 4868 | 6608 | 8696 | 11189 | 14143 | 17616 | 21665 | 26347 | 31720 |
| | 2 P absorbée | (W) | 2658 | 3066 | 3486 | 3915 | 4351 | 4788 | 5226 | 5660 | 6087 |
| | 3 I absorbée | (A) | 5.06 | 5.60 | 6.17 | 6.78 | 7.42 | 8.09 | 8.78 | 9.48 | 10.2 |
| 40 | 1 P frigorifique | (Watt) | | 5314 | 7185 | 9397 | 12009 | 15075 | 18655 | 22805 | 27581 |
| | 2 P absorbée | (W) | | 3157 | 3652 | 4161 | 4681 | 5208 | 5740 | 6274 | 6806 |
| | 3 I absorbée | (A) | | 5.75 | 6.44 | 7.16 | 7.91 | 8.69 | 9.49 | 10.3 | 11.2 |
| 50 | 1 P frigorifique | (Watt) | | | 5584 | 7488 | 9726 | 12358 | 15439 | 19026 | 23178 |
| | 2 P absorbée | (W) | | | 3686 | 4285 | 4900 | 5528 | 6166 | 6810 | 7457 |
| | 3 I absorbée | (A) | | | 6.52 | 7.37 | 8.25 | 9.16 | 10.1 | 11.1 | 12.0 |
| 60 | 1 P frigorifique | (Watt) | | | | 5566 | 7403 | 9570 | 12123 | 15120 | 18617 |
| | 2 P absorbée | (W) | | | | 4241 | 4962 | 5701 | 6455 | 7220 | 7993 |
| | 3 I absorbée | (A) | | | | 7.35 | 8.38 | 9.45 | 10.5 | 11.7 | 12.8 |

| 60 Hz R449A (*) | | | | | | | | | | | |
|------------------------|--------------------|--------|------|------|-------|-------|-------|-------|-------|-------|---------------|
| | | | | | | | | | | | N°2270 |
| 4 T condensation | 5 T évaporation | (°C) | -25 | -20 | -15 | -10 | -5 | 0 | 5 | 10 | 15 |
| 30 | 1 P frigorifique | (Watt) | 6121 | 8201 | 10676 | 13614 | 17080 | 21140 | 25860 | 31307 | 37545 |
| | 2 P absorbée | (W) | 3444 | 3972 | 4519 | 5080 | 5646 | 6211 | 6769 | 7312 | 7833 |
| | 3 I absorbée | (A) | 5.60 | 6.36 | 7.12 | 7.90 | 8.67 | 9.45 | 10.2 | 11.0 | 11.7 |
| 40 | 1 P frigorifique | (Watt) | | 6715 | 8931 | 11525 | 14562 | 18107 | 22229 | 26991 | 32460 |
| | 2 P absorbée | (W) | | 4085 | 4711 | 5364 | 6037 | 6724 | 7418 | 8112 | 8799 |
| | 3 I absorbée | (A) | | 6.52 | 7.45 | 8.38 | 9.33 | 10.3 | 11.2 | 12.1 | 13.0 |
| 50 | 1 P frigorifique | (Watt) | | | 7168 | 9415 | 12021 | 15051 | 18571 | 22647 | 27346 |
| | 2 P absorbée | (W) | | | 4817 | 5552 | 6322 | 7121 | 7941 | 8775 | 9617 |
| | 3 I absorbée | (A) | | | 7.49 | 8.61 | 9.74 | 10.9 | 12.0 | 13.1 | 14.2 |
| 60 | 1 P frigorifique | (Watt) | | | | 7341 | 9514 | 12026 | 14944 | 18332 | 22258 |
| | 2 P absorbée | (W) | | | | 5666 | 6523 | 7422 | 8358 | 9323 | 10310 |
| | 3 I absorbée | (A) | | | | 8.52 | 9.86 | 11.2 | 12.6 | 13.9 | 15.2 |

1 = cooling capacity 2 = power input 3 = current 4 = condensing temperature 5 = evaporating temperature

(*) Veuillez vous référer strictement aux Recommandations d'Utilisation et Bulletins Marketing Tecumseh du fait de la température de reflux élevée pour les applications LBP.
 (*) Due to very high discharge temperature especially on LBP conditions, please strictly refer to Tecumseh Guidelines & Marketing Bulletin when using this refrigerant.

Nota : Tecumseh se réserve le droit de modifier les informations contenues dans ce document sans préavis.

Note : Tecumseh reserves the right to change information contained in this document without notification.

© 2021 Tecumseh Products Company
All rights reserved