



Compressor
Voltage Code : TZ

TAG5568E

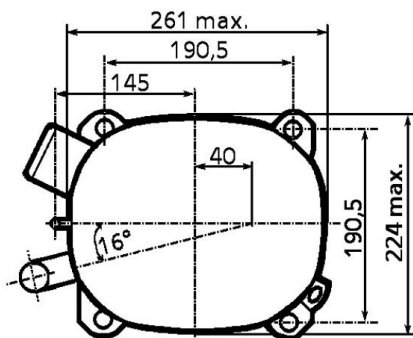
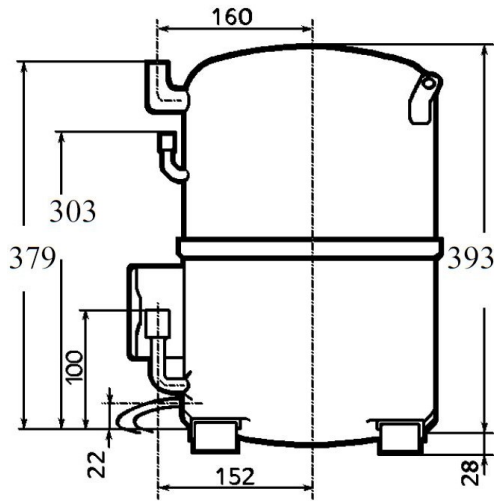
Air Conditioning & Heating (CA)

400V 3~ 50Hz / 440V 3~ 60 Hz

R22

AGB5568ETZ

Conditions	Frequency	Nominal Cooling Capacity		Sound Power ISO3745 / ISO 3743-1
		Watts	BTU/h	
EN12900 / R22	50 Hz / 60 Hz	15201 / 17890	51835 / 61006	75 dBA



Displacement (cc)	124,4
Net Weight (Kg)	46.0
Oil Quantity (cc)	1760.0
Oil Type	Mineral
Expansion Device	Capillary_Tube/Expansion_Valve
Cooling	Fan
Main Winding (Ohm)	2.64
Current	
RLA (A)	9.6 11
MCC (A)	15.6 16.5
LRA (A)	54 59
Electrical Equipment	TRI
Overload	Interne
Refrigerating connection for OD	
Suction Tube	22.2 (7/8")
Discharge Tube	12.7 (1/2")
Process Tube	6.35 (1/4")

* EN12900 : T°Cond. 50.0°C / T°Evap. 5.0°C / T°Superheat. 10.0°C
T°Subcooling. 0.0K

Certificates :



Note : Tecumseh reserves the right to change information contained in this document without notification.



Tecumseh

TAG5568E	Tension TZ : 400V 3~ 50Hz / 440V 3~ 60 Hz
-----------------	--

Les performances sont données dans les conditions EN12900 :	Surchauffe :	10.0 K
Condition Dew	Sous refroidissement :	0.0 K
The performance data are in EN12900 conditions :	Superheat :	10.0 K
Dew Condition	Subcooling :	0.0 K

50 Hz R22											
											N°337JL-T
4 T condensation	5 T évaporation	(°C)	-25	-20	-15	-10	-5	0	5	10	15
40	1 P frigorifique	(Watt)				8903	11385	14440	18069	22272	27051
	2 P absorbée	(W)				3604	4018	4435	4853	5273	5694
	3 I absorbée	(A)				6.74	7.39	8.02	8.64	9.23	9.81
50	1 P frigorifique	(Watt)					9326	12005	15201	18916	23150
	2 P absorbée	(W)					4246	4791	5337	5882	6428
	3 I absorbée	(A)					7.64	8.49	9.33	10.1	10.9
60	1 P frigorifique	(Watt)						9678	12453	15689	19389
	2 P absorbée	(W)						5150	5822	6493	7162
	3 I absorbée	(A)						8.96	10.0	11.0	12.1

60 Hz R22											
											N°337JL-T
4 T condensation	5 T évaporation	(°C)	-25	-20	-15	-10	-5	0	5	10	15
40	1 P frigorifique	(Watt)				10580	13491	17054	21268	26137	31659
	2 P absorbée	(W)				5071	5522	5981	6449	6927	7413
	3 I absorbée	(A)				7.95	8.58	9.22	9.86	10.5	11.1
50	1 P frigorifique	(Watt)					11050	14176	17890	22195	27091
	2 P absorbée	(W)					5833	6461	7093	7727	8363
	3 I absorbée	(A)					8.87	9.76	10.6	11.5	12.4
60	1 P frigorifique	(Watt)						11425	14652	18406	22687
	2 P absorbée	(W)						6945	7738	8528	9314
	3 I absorbée	(A)						10.3	11.4	12.6	13.7

1 = cooling capacity 2 = power input 3 = current 4 = condensing temperature 5 = evaporating temperature

Nota : Tecumseh se réserve le droit de modifier les informations contenues dans ce document sans préavis.
Note : Tecumseh reserves the right to change information contained in this document without notification.

© 2021 Tecumseh Products Company
All rights reserved