



Compressor
Voltage Code : TZ

TAJ5515E-TZ

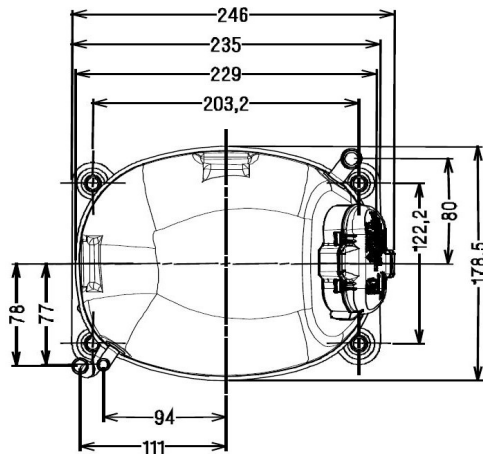
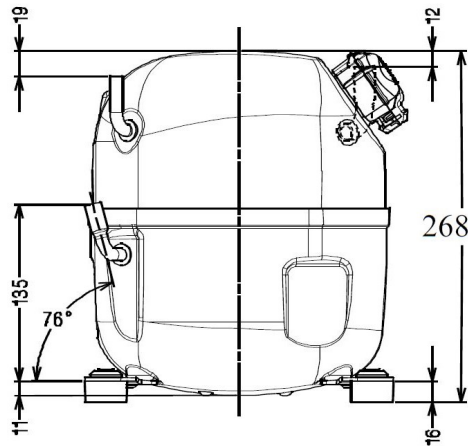
Air Conditioning & Heating (CA)

400V 3~ 50Hz / 440V 3~ 60 Hz

R22

AJ5515E-TZ1C

Conditions	Frequency	Nominal Cooling Capacity		Sound Power ISO3745 / ISO 3743-1
		Watts	BTU/h	
EN12900 / R22	50 Hz / 60 Hz	3365 / 3964	11476 / 13519	



Displacement (cc)	25,95
Net Weight (Kg)	21.0
Oil Quantity (cc)	475.0
Oil Type	Mineral
Expansion Device	Capillary_Tube/Expansion_Valve
Cooling	Fan
Main Winding (Ohm)	11.0
Current	
RLA (A)	2.7 2.9
MCC (A)	3.8 4
LRA (A)	18 18
Electrical Equipment	TRI
Overload	Interne
Refrigerating connection for OD	
Suction Tube	12.7 (1/2")
Discharge Tube	7.9 (5/16")
Process Tube	6.35 (1/4")

* EN12900 : T°Cond. 50.0°C / T°Evap. 5.0°C / T°Superheat. 10.0°C
T°Subcooling. 0.0K

Certificates :



Note : Tecumseh reserves the right to change information contained in this document without notification.



Tecumseh

TAJ5515E-TZ	Tension TZ : 400V 3~ 50Hz / 440V 3~ 60 Hz
--------------------	--------------------------------------------------

Les performances sont données dans les conditions EN12900 :	Surchauffe :	10.0 K
Condition Dew	Sous refroidissement :	0.0 K
The performance data are in EN12900 conditions :	Superheat :	10.0 K
Dew Condition	Subcooling :	0.0 K

50 Hz R22											
											N°331JL-TZ
4 T condensation	5 T évaporation	(°C)	-25	-20	-15	-10	-5	0	5	10	15
40	1 P frigorifique	(Watt)				2140	2687	3308	4002	4771	5614
	2 P absorbée	(W)				1054	1109	1165	1222	1280	1338
	3 I absorbée	(A)				2.02	2.09	2.16	2.23	2.30	2.37
50	1 P frigorifique	(Watt)					2210	2755	3365	4041	4781
	2 P absorbée	(W)					1170	1258	1343	1426	1507
	3 I absorbée	(A)					2.16	2.29	2.41	2.53	2.64
60	1 P frigorifique	(Watt)						2221	2751	3338	3981
	2 P absorbée	(W)						1353	1466	1574	1676
	3 I absorbée	(A)						2.41	2.59	2.75	2.91

60 Hz R22											
											N°331JL-TZ
4 T condensation	5 T évaporation	(°C)	-25	-20	-15	-10	-5	0	5	10	15
40	1 P frigorifique	(Watt)				2567	3207	3922	4715	5584	6530
	2 P absorbée	(W)				1307	1400	1487	1569	1644	1713
	3 I absorbée	(A)				2.08	2.17	2.26	2.35	2.45	2.56
50	1 P frigorifique	(Watt)					2637	3267	3964	4729	5561
	2 P absorbée	(W)					1477	1606	1725	1834	1933
	3 I absorbée	(A)					2.24	2.39	2.54	2.69	2.85
60	1 P frigorifique	(Watt)						2633	3241	3907	4631
	2 P absorbée	(W)						1727	1882	2024	2153
	3 I absorbée	(A)						2.52	2.73	2.93	3.14

1 = cooling capacity 2 = power input 3 = current 4 = condensing temperature 5 = evaporating temperature

Nota : Tecumseh se réserve le droit de modifier les informations contenues dans ce document sans préavis.
Note : Tecumseh reserves the right to change information contained in this document without notification.

© 2021 Tecumseh Products Company
All rights reserved