



Compressor
Voltage Code : TZ

TFH5524C

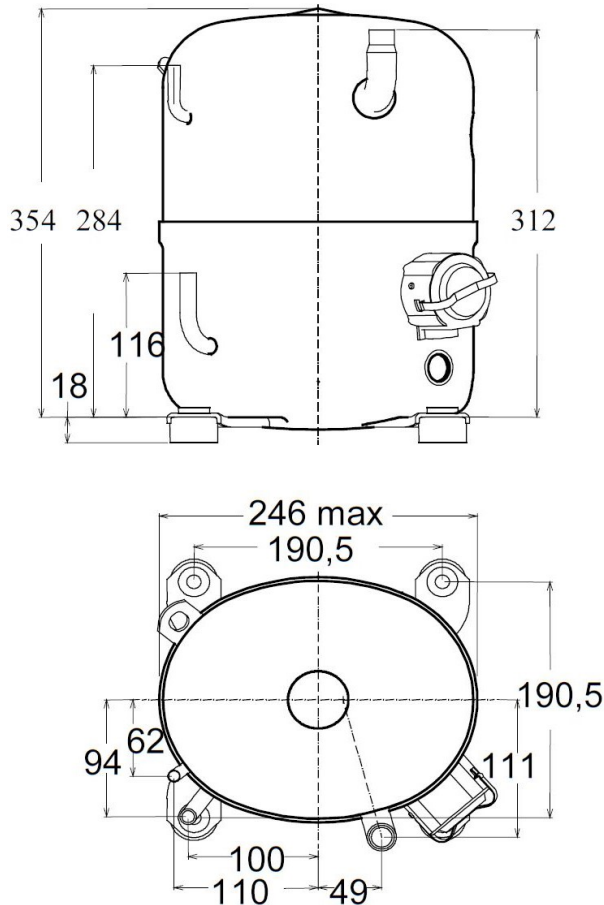
Air Conditioning & Heating (CA)

400V 3~ 50Hz / 440V 3~ 60 Hz

R407C

AHC5524CTZ

Conditions	Frequency	Nominal Cooling Capacity		Sound Power ISO3745 / ISO 3743-1
		Watts	BTU/h	
EN12900 / R407C	50 Hz / 60 Hz	5012 / 6079	17090 / 20729	71 dBA



Displacement (cc)	43,5
Net Weight (Kg)	31.1
Oil Quantity (cc)	1330.0
Oil Type	Polyolester
Expansion Device	Capillary_Tube/Expansion_Valve
Cooling	Fan
Main Winding (Ohm)	6.28
Current	
RLA (A)	3.9 4.1
MCC (A)	6.7 6.8
LRA (A)	24.8 25.1
Electrical Equipment	TRI
Overload	Interne
Refrigerating connection for OD	
Suction Tube	15.9 (5/8")
Discharge Tube	9.5 (3/8")
Process Tube	6.35 (1/4")

* EN12900 : T°Cond. 50.0°C / T°Evap. 5.0°C / T°Superheat. 10.0°C
T°Subcooling. 0.0K

Certificates :



Note : Tecumseh reserves the right to change information contained in this document without notification.



Tecumseh

TFH5524C	Tension TZ : 400V 3~ 50Hz / 440V 3~ 60 Hz
-----------------	--

Les performances sont données dans les conditions EN12900 :	Surchauffe :	10.0 K
Condition Mid	Sous refroidissement :	0.0 K
The performance data are in EN12900 conditions :	Superheat :	10.0 K
Mid Condition	Subcooling :	0.0 K

50 Hz R407C											
											N°345SL-T
4 T condensation	5 T évaporation	(°C)	-25	-20	-15	-10	-5	0	5	10	15
40	1 P frigorifique	(Watt)				2767	3686	4789	6099	7637	9423
	2 P absorbée	(W)				1503	1647	1780	1905	2030	2158
	3 I absorbée	(A)				3.31	3.46	3.62	3.78	3.94	4.11
50	1 P frigorifique	(Watt)					2933	3878	5012	6355	7929
	2 P absorbée	(W)					1740	1926	2097	2256	2410
	3 I absorbée	(A)					3.57	3.78	4.00	4.22	4.45
60	1 P frigorifique	(Watt)						2999	3946	5084	6436
	2 P absorbée	(W)						2004	2245	2465	2671
	3 I absorbée	(A)						3.91	4.19	4.46	4.75

60 Hz R407C											
											N°345SL-T
4 T condensation	5 T évaporation	(°C)	-25	-20	-15	-10	-5	0	5	10	15
40	1 P frigorifique	(Watt)				3388	4519	5833	7350	9092	11078
	2 P absorbée	(W)				1866	2081	2280	2471	2666	2873
	3 I absorbée	(A)				3.29	3.55	3.81	4.07	4.33	4.58
50	1 P frigorifique	(Watt)					3625	4760	6079	7603	9354
	2 P absorbée	(W)					2180	2428	2658	2878	3099
	3 I absorbée	(A)					3.65	3.97	4.29	4.60	4.92
60	1 P frigorifique	(Watt)						3727	4821	6102	7589
	2 P absorbée	(W)						2521	2805	3069	3321
	3 I absorbée	(A)						4.14	4.51	4.89	5.26

1 = cooling capacity 2 = power input 3 = current 4 = condensing temperature 5 = evaporating temperature

Nota : Tecumseh se réserve le droit de modifier les informations contenues dans ce document sans préavis.
Note : Tecumseh reserves the right to change information contained in this document without notification.

© 2021 Tecumseh Products Company
All rights reserved