



Compressor
Voltage Code : GZ

CAJ9510Z-GZ

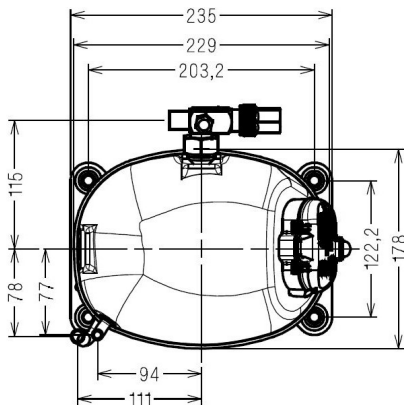
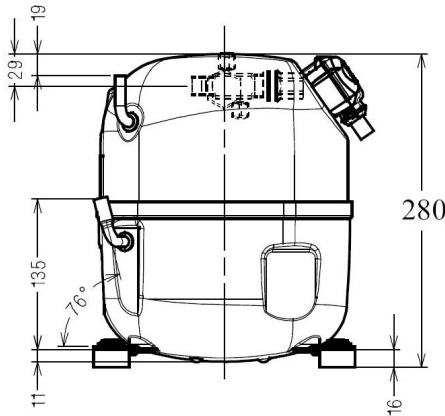
High Temp. Commercial (MHP)

208 - 220V 1~ 50 Hz

R452A / R404A / R448A / R449A

AJK510Z-GZ3B

Conditions	Frequency	Nominal Cooling Capacity		Sound Power ISO3745 / ISO 3743-1
		Watts	BTU/h	
EN12900_HP / R452A	50 Hz	2333	7954	63 dBA
EN12900_HP / R404A	50 Hz	2327	7934	63 dBA
EN12900_HP / R448A	50 Hz	2335	7961	63 dBA
EN12900_HP / R449A	50 Hz	2335	7961	63 dBA



* EN12900_HP : T°Cond. 50.0°C / T°Evap. 5.0°C / T°Return gas temp.. 20.0°C
T°Subcooling. 0.0K

Certificates :



Displacement (cc)	18,3
Net Weight (Kg)	23.0
Oil Quantity (cc)	475.0
Oil Type	Polyolester
Expansion Device	Capillary_Tube/Expansion_Valve
Cooling	Fan
Main Winding (Ohm)	25.0
Start Winding (Ohm)	10.4
Current	
RLA (A)	5.6
MCC (A)	9
LRA (A)	32
Electrical Equipment	CSR
Overload	MRA38088
Time Check	2.8s - 5.2s / 27.5 A
Open Temp	105° C
Close Temp	57° C
Optional	T0419
Start Capacitor	88 µF / 330 V
Run Capacitor	15 µF / 400 V
Potential Relay	RVA4AP**
Pick Up	300/328V
Drop Out	60/121V
Refrigerating connection for OD	
Suction Tube	15.9 (5/8")
Discharge Tube	7.9 (5/16")
Process Tube	6.35 (1/4")

Note : Tecumseh reserves the right to change information contained in this document without notification.



Tecumseh

CAJ9510Z-GZ	Tension GZ : 208 - 220V 1~ 50 Hz
--------------------	---

Les performances sont données dans les **conditions EN12900_HP** :
 Condition Dew
 The performance data are in **EN12900_HP conditions** :
 Dew Condition

Gaz aspirés : 20.0 °C
 Sous refroidissement : 0.0 K
 Return gas : 20.0 °C
 Subcooling : 0.0 K

50 Hz R452A											
											N°2452
4 T condensation	5 T évaporation	(°C)	-25	-20	-15	-10	-5	0	5	10	15
30	1 P frigorifique	(Watt)	925	1187	1499	1867	2297	2795	3368	4022	4761
	2 P absorbée	(W)	557	617	673	724	772	815	855	891	923
	3 I absorbée	(A)	2.95	3.22	3.46	3.68	3.89	4.08	4.26	4.42	4.56
40	1 P frigorifique	(Watt)	742	977	1251	1570	1940	2366	2856	3415	4050
	2 P absorbée	(W)	571	648	721	790	855	916	973	1026	1076
	3 I absorbée	(A)	2.95	3.31	3.65	3.97	4.28	4.57	4.84	5.10	5.34
50	1 P frigorifique	(Watt)		763	998	1266	1574	1927	2333	2796	3324
	2 P absorbée	(W)		659	752	842	927	1008	1086	1159	1229
	3 I absorbée	(A)		3.36	3.79	4.21	4.62	5.01	5.38	5.74	6.08
60	1 P frigorifique	(Watt)			733	950	1194	1474	1794	2160	2580
	2 P absorbée	(W)			763	876	984	1089	1190	1286	1380
	3 I absorbée	(A)			3.89	4.41	4.91	5.40	5.87	6.33	6.77

50 Hz R404A											
											N°224ET-GZ
4 T condensation	5 T évaporation	(°C)	-25	-20	-15	-10	-5	0	5	10	15
30	1 P frigorifique	(Watt)	986	1251	1566	1935	2364	2859	3426	4070	4797
	2 P absorbée	(W)	590	651	707	759	806	849	886	920	949
	3 I absorbée	(A)	3.13	3.39	3.64	3.86	4.06	4.25	4.42	4.56	4.69
40	1 P frigorifique	(Watt)	793	1030	1303	1619	1984	2402	2881	3424	4039
	2 P absorbée	(W)	609	687	761	830	894	953	1008	1059	1105
	3 I absorbée	(A)	3.15	3.51	3.85	4.17	4.47	4.75	5.01	5.26	5.48
50	1 P frigorifique	(Watt)		804	1036	1298	1597	1938	2327	2769	3270
	2 P absorbée	(W)		704	797	886	970	1050	1125	1195	1260
	3 I absorbée	(A)		3.58	4.02	4.44	4.83	5.21	5.57	5.91	6.23
60	1 P frigorifique	(Watt)			760	968	1200	1463	1761	2101	2488
	2 P absorbée	(W)			815	927	1033	1135	1233	1325	1413
	3 I absorbée	(A)			4.15	4.66	5.16	5.63	6.09	6.52	6.94

1 = cooling capacity 2 = power input 3 = current 4 = condensing temperature 5 = evaporating temperature

Nota : Tecumseh se réserve le droit de modifier les informations contenues dans ce document sans préavis.

Note : Tecumseh reserves the right to change information contained in this document without notification.

© 2021 Tecumseh Products Company
All rights reserved



Tecumseh

CAJ9510Z-GZ	Tension GZ : 208 - 220V 1~ 50 Hz
--------------------	---

Les performances sont données dans les conditions EN12900_HP : Condition Dew	Gaz aspirés : 20.0 °C Sous refroidissement : 0.0 K
The performance data are in EN12900_HP conditions : Dew Condition	Return gas : 20.0 °C Subcooling : 0.0 K

50 Hz R448A (*)											
											N°2900
4 T condensation	5 T évaporation	(°C)	-25	-20	-15	-10	-5	0	5	10	15
30	1 P frigorifique	(Watt)	814	1071	1378	1742	2169	2668	3244	3905	4658
	2 P absorbée	(W)	519	574	627	677	723	766	805	839	868
	3 I absorbée	(A)	2.75	2.99	3.22	3.44	3.65	3.84	4.01	4.16	4.29
40	1 P frigorifique	(Watt)		887	1160	1479	1853	2287	2789	3367	4026
	2 P absorbée	(W)		608	677	742	805	863	918	968	1014
	3 I absorbée	(A)		3.11	3.42	3.73	4.02	4.30	4.57	4.81	5.03
50	1 P frigorifique	(Watt)			939	1215	1535	1906	2335	2829	3395
	2 P absorbée	(W)			711	797	879	959	1034	1105	1171
	3 I absorbée	(A)			3.58	3.99	4.38	4.76	5.12	5.47	5.79
60	1 P frigorifique	(Watt)				951	1218	1526	1881	2293	2766
	2 P absorbée	(W)				833	941	1045	1145	1242	1333
	3 I absorbée	(A)				4.19	4.69	5.18	5.66	6.11	6.55

50 Hz R449A (*)											
											N°2446
4 T condensation	5 T évaporation	(°C)	-25	-20	-15	-10	-5	0	5	10	15
30	1 P frigorifique	(Watt)	814	1071	1378	1742	2169	2668	3244	3905	4658
	2 P absorbée	(W)	519	574	627	677	723	766	805	839	868
	3 I absorbée	(A)	2.75	2.99	3.22	3.44	3.65	3.84	4.01	4.16	4.29
40	1 P frigorifique	(Watt)		887	1160	1479	1853	2287	2789	3367	4026
	2 P absorbée	(W)		608	677	742	805	863	918	968	1014
	3 I absorbée	(A)		3.11	3.42	3.73	4.02	4.30	4.57	4.81	5.03
50	1 P frigorifique	(Watt)			939	1215	1535	1906	2335	2829	3395
	2 P absorbée	(W)			711	797	879	959	1034	1105	1171
	3 I absorbée	(A)			3.58	3.99	4.38	4.76	5.12	5.47	5.79
60	1 P frigorifique	(Watt)				951	1218	1526	1881	2293	2766
	2 P absorbée	(W)				833	941	1045	1145	1242	1333
	3 I absorbée	(A)				4.19	4.69	5.18	5.66	6.11	6.55

1 = cooling capacity 2 = power input 3 = current 4 = condensing temperature 5 = evaporating temperature

(*) Veuillez vous référer strictement aux Recommandations d'Utilisation et Bulletins Marketing Tecumseh du fait de la température de reflux élevée pour les applications LBP.
 (*) Due to very high discharge temperature especially on LBP conditions, please strictly refer to Tecumseh Guidelines & Marketing Bulletin when using this refrigerant.

Nota : Tecumseh se réserve le droit de modifier les informations contenues dans ce document sans préavis.
Note : Tecumseh reserves the right to change information contained in this document without notification.

© 2021 Tecumseh Products Company
All rights reserved