



Compressor
Voltage Code : XG

FH4525Y-XG

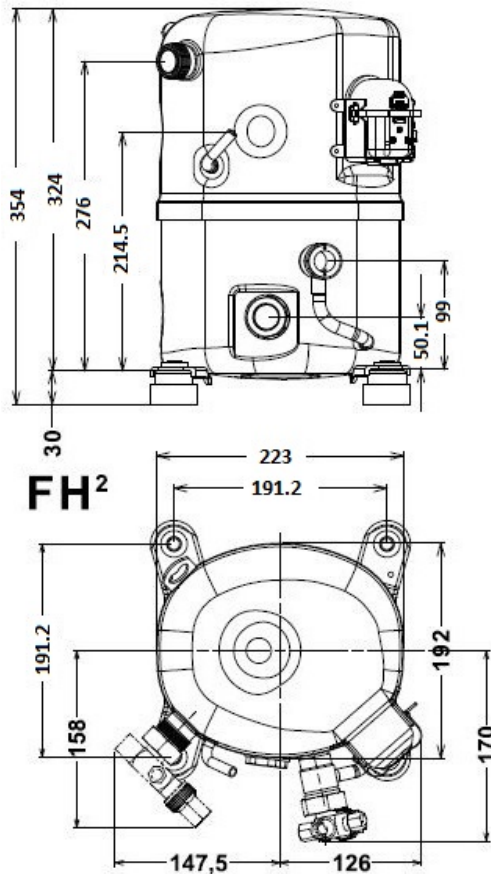
High Temp. Commercial (HP)

380-420V 3~ 50Hz / 460V 3~ 60 Hz

R134a / R513A

FH4525Y-XG1A

Conditions	Frequency	Nominal Cooling Capacity		Sound Power ISO3745 / ISO 3743-1
		Watts	BTU/h	
EN12900_HP / R134a	50 Hz / 60 Hz	5238 / 6198	17861 / 21135	71 dBA
EN12900_HP / R513A	50 Hz / 60 Hz	5330 / 6307	18175 / 21507	71 dBA



Displacement (cc)	63
Net Weight (Kg)	29.0
Oil Quantity (cc)	1140.0
Oil Type	Polyolester
Expansion Device	Capillary_Tube/Expansion_Valve
Cooling	Fan
Main Winding (Ohm)	14.2
Current	
RLA (A)	3.4 3.4
MCC (A)	5.9
LRA (A)	26
Electrical Equipment	TRI
Overload	Interne
Refrigerating connection for OD	
Suction Tube	15.9 (5/8")
Discharge Tube	12.7 (1/2")
Process Tube	6.35 (1/4")

* EN12900_HP : T°Cond. 50.0°C / T°Evap. 5.0°C / T°Return gas temp.. 20.0°C
T°Subcooling. 0.0K

Certificates :



Note : Tecumseh reserves the right to change information contained in this document without notification.



Tecumseh

FH4525Y-XG	Tension XG : 380-420V 3~ 50Hz / 460V 3~ 60 Hz
-------------------	--

Les performances sont données dans les conditions EN12900_HP :	Gaz aspirés :	20.0 °C
Condition Dew	Sous refroidissement :	0.0 K
The performance data are in EN12900_HP conditions :	Return gas :	20.0 °C
Dew Condition	Subcooling :	0.0 K

50 Hz R134a											
											N°User-359
4 T condensation	5 T évaporation	(°C)	-25	-20	-15	-10	-5	0	5	10	15
30	1 P frigorifique	(Watt)	1399	2013	2755	3645	4703	5949	7404	9088	11020
	2 P absorbée	(W)	811	924	1032	1136	1235	1330	1422	1509	1594
	3 I absorbée	(A)	1.47	1.70	1.92	2.13	2.32	2.49	2.65	2.80	2.93
40	1 P frigorifique	(Watt)	1013	1568	2226	3006	3930	5017	6287	7762	9459
	2 P absorbée	(W)	810	954	1094	1232	1368	1502	1634	1764	1893
	3 I absorbée	(A)	1.37	1.67	1.95	2.22	2.48	2.72	2.95	3.16	3.36
50	1 P frigorifique	(Watt)		1151	1732	2412	3209	4144	5238	6510	7980
	2 P absorbée	(W)		945	1121	1297	1473	1648	1824	2000	2177
	3 I absorbée	(A)		1.62	1.97	2.31	2.63	2.94	3.23	3.51	3.77
60	1 P frigorifique	(Watt)			1281	1867	2545	3337	4261	5338	6589
	2 P absorbée	(W)			1119	1336	1555	1776	1999	2225	2453
	3 I absorbée	(A)			1.98	2.38	2.77	3.14	3.50	3.85	4.18

60 Hz R134a											
											N°User-359
4 T condensation	5 T évaporation	(°C)	-25	-20	-15	-10	-5	0	5	10	15
30	1 P frigorifique	(Watt)	1657	2384	3261	4313	5565	7038	8759	10750	13035
	2 P absorbée	(W)	981	1121	1254	1381	1503	1619	1731	1839	1944
	3 I absorbée	(A)	1.47	1.70	1.92	2.13	2.32	2.49	2.65	2.80	2.93
40	1 P frigorifique	(Watt)	1198	1855	2633	3557	4650	5936	7439	9182	11190
	2 P absorbée	(W)	974	1153	1326	1496	1661	1823	1982	2139	2294
	3 I absorbée	(A)	1.37	1.67	1.95	2.22	2.48	2.72	2.95	3.16	3.36
50	1 P frigorifique	(Watt)		1360	2049	2853	3797	4904	6198	7703	9443
	2 P absorbée	(W)		1138	1358	1575	1790	2003	2215	2425	2636
	3 I absorbée	(A)		1.62	1.97	2.31	2.63	2.94	3.23	3.51	3.77
60	1 P frigorifique	(Watt)			1514	2208	3012	3949	5044	6320	7802
	2 P absorbée	(W)			1348	1619	1888	2158	2428	2699	2971
	3 I absorbée	(A)			1.98	2.38	2.77	3.14	3.50	3.85	4.18

1 = cooling capacity 2 = power input 3 = current 4 = condensing temperature 5 = evaporating temperature

Nota : Tecumseh se réserve le droit de modifier les informations contenues dans ce document sans préavis.

Note : Tecumseh reserves the right to change information contained in this document without notification.

© 2021 Tecumseh Products Company
All rights reserved



Tecumseh

FH4525Y-XG	Tension XG : 380-420V 3~ 50Hz / 460V 3~ 60 Hz
-------------------	--

Les performances sont données dans les **conditions EN12900_HP** :
 Condition Dew
 The performance data are in **EN12900_HP conditions** :
 Dew Condition

Gaz aspirés : 20.0 °C
 Sous refroidissement : 0.0 K
 Return gas : 20.0 °C
 Subcooling : 0.0 K

© 2021 Tecumseh Products Company
All rights reserved

50 Hz R513A

N°User-360

4 T condensation	5 T évaporation	(°C)	-25	-20	-15	-10	-5	0	5	10	15
30	1 P frigorifique	(Watt)	1611	2277	3055	3961	5011	6219	7602	9173	10950
	2 P absorbée	(W)	901	1014	1118	1217	1316	1419	1530	1655	1796
	3 I absorbée	(A)	1.64	1.87	2.08	2.28	2.47	2.66	2.85	3.07	3.30
40	1 P frigorifique	(Watt)	1139	1734	2426	3230	4160	5233	6464	7867	9458
	2 P absorbée	(W)	884	1036	1178	1314	1447	1584	1727	1882	2052
	3 I absorbée	(A)	1.49	1.81	2.10	2.37	2.62	2.87	3.12	3.37	3.64
50	1 P frigorifique	(Watt)		1253	1847	2537	3337	4263	5330	6553	7949
	2 P absorbée	(W)		1007	1194	1374	1551	1728	1911	2104	2311
	3 I absorbée	(A)		1.73	2.10	2.45	2.77	3.08	3.39	3.69	4.01
60	1 P frigorifique	(Watt)			1358	1922	2581	3348	4241	5273	6461
	2 P absorbée	(W)			1172	1403	1630	1857	2087	2326	2577
	3 I absorbée	(A)			2.07	2.50	2.91	3.29	3.66	4.02	4.39

60 Hz R513A

N°User-360

4 T condensation	5 T évaporation	(°C)	-25	-20	-15	-10	-5	0	5	10	15
30	1 P frigorifique	(Watt)	1908	2696	3616	4688	5930	7359	8993	10851	12951
	2 P absorbée	(W)	1090	1230	1357	1479	1601	1727	1864	2017	2191
	3 I absorbée	(A)	1.64	1.87	2.08	2.28	2.47	2.66	2.85	3.07	3.30
40	1 P frigorifique	(Watt)	1347	2052	2871	3821	4922	6192	7647	9307	11189
	2 P absorbée	(W)	1062	1252	1428	1594	1757	1923	2096	2282	2487
	3 I absorbée	(A)	1.49	1.81	2.10	2.37	2.62	2.87	3.12	3.37	3.64
50	1 P frigorifique	(Watt)		1481	2184	3001	3948	5044	6307	7755	9406
	2 P absorbée	(W)		1212	1446	1669	1885	2100	2321	2551	2798
	3 I absorbée	(A)		1.73	2.10	2.45	2.77	3.08	3.39	3.69	4.01
60	1 P frigorifique	(Watt)			1605	2273	3053	3963	5020	6243	7650
	2 P absorbée	(W)			1411	1700	1980	2256	2535	2821	3121
	3 I absorbée	(A)			2.07	2.50	2.91	3.29	3.66	4.02	4.39

1 = cooling capacity 2 = power input 3 = current 4 = condensing temperature 5 = evaporating temperature

Nota : Tecumseh se réserve le droit de modifier les informations contenues dans ce document sans préavis.

Note : Tecumseh reserves the right to change information contained in this document without notification.