



Compressor
Voltage Code : TZ

TFH5522C

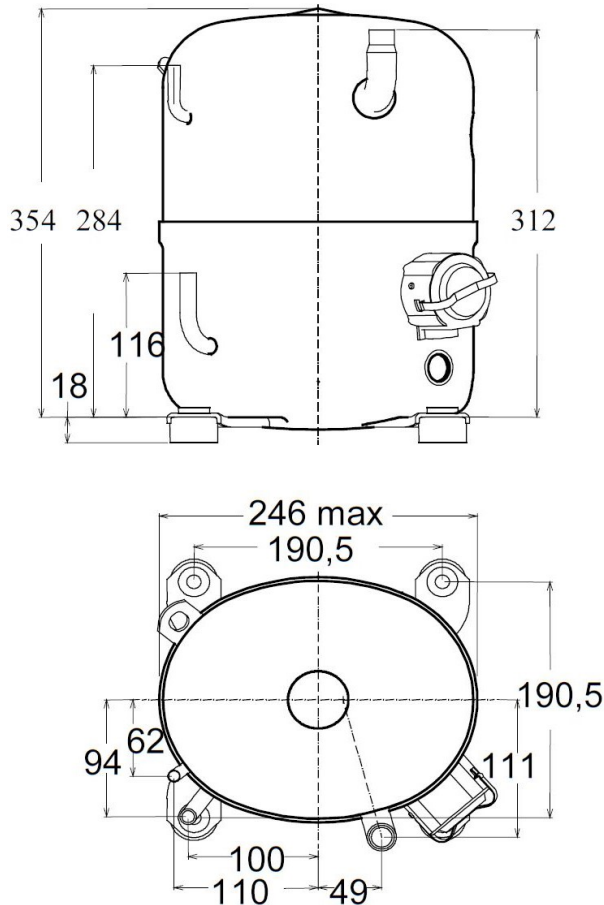
Air Conditioning & Heating (CA)

400V 3~ 50Hz / 440V 3~ 60 Hz

R407C

AHC5522CTZ

Conditions	Frequency	Nominal Cooling Capacity		Sound Power ISO3745 / ISO 3743-1
		Watts	BTU/h	
EN12900 / R407C	50 Hz / 60 Hz	4659 / 5442	15888 / 18557	74 dBA



Displacement (cc)	39,95
Net Weight (Kg)	31.0
Oil Quantity (cc)	1330.0
Oil Type	Polyolester
Expansion Device	Capillary_Tube/Expansion_Valve
Cooling	Fan
Main Winding (Ohm)	6.28
Current	
RLA (A)	3.5 3.7
MCC (A)	7.1 7.2
LRA (A)	24.8 25
Electrical Equipment	TRI
Overload	Interne
Refrigerating connection for OD	
Suction Tube	15.9 (5/8")
Discharge Tube	9.5 (3/8")
Process Tube	6.35 (1/4")

* EN12900 : T°Cond. 50.0°C / T°Evap. 5.0°C / T°Superheat. 10.0°C
T°Subcooling. 0.0K

Certificates :



Note : Tecumseh reserves the right to change information contained in this document without notification.



Tecumseh

TFH5522C	Tension TZ : 400V 3~ 50Hz / 440V 3~ 60 Hz
-----------------	--

Les performances sont données dans les conditions EN12900 :	Surchauffe :	10.0 K
Condition Mid	Sous refroidissement :	0.0 K
The performance data are in EN12900 conditions :	Superheat :	10.0 K
Mid Condition	Subcooling :	0.0 K

50 Hz R407C											
											N°345QL-T
4 T condensation	5 T évaporation	(°C)	-25	-20	-15	-10	-5	0	5	10	15
40	1 P frigorifique	(Watt)				2534	3420	4476	5719	7166	8834
	2 P absorbée	(W)				1550	1737	1928	2126	2331	2545
	3 I absorbée	(A)				3.06	3.21	3.34	3.47	3.58	3.69
50	1 P frigorifique	(Watt)					2677	3581	4659	5928	7405
	2 P absorbée	(W)					1794	2023	2258	2500	2750
	3 I absorbée	(A)					3.27	3.46	3.64	3.82	3.98
60	1 P frigorifique	(Watt)						2737	3635	4712	5983
	2 P absorbée	(W)						2095	2375	2663	2959
	3 I absorbée	(A)						3.58	3.81	4.05	4.27

60 Hz R407C											
											N°345QL-T
4 T condensation	5 T évaporation	(°C)	-25	-20	-15	-10	-5	0	5	10	15
40	1 P frigorifique	(Watt)				2864	3903	5193	6761	8633	10836
	2 P absorbée	(W)				1550	1737	1928	2126	2331	2545
	3 I absorbée	(A)				2.96	3.20	3.44	3.68	3.92	4.16
50	1 P frigorifique	(Watt)					3022	4099	5442	7075	9026
	2 P absorbée	(W)					1794	2023	2258	2500	2750
	3 I absorbée	(A)					3.23	3.53	3.83	4.14	4.44
60	1 P frigorifique	(Watt)						3105	4199	5571	7247
	2 P absorbée	(W)						2095	2375	2663	2959
	3 I absorbée	(A)						3.61	3.97	4.33	4.70

1 = cooling capacity 2 = power input 3 = current 4 = condensing temperature 5 = evaporating temperature

Nota : Tecumseh se réserve le droit de modifier les informations contenues dans ce document sans préavis.

Note : Tecumseh reserves the right to change information contained in this document without notification.

© 2021 Tecumseh Products Company
All rights reserved