



Compressor
Voltage Code : GZ

CAJ2446Z-GZ

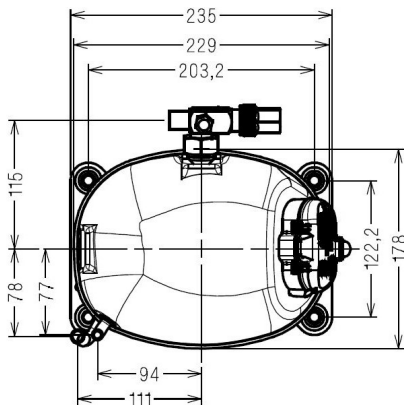
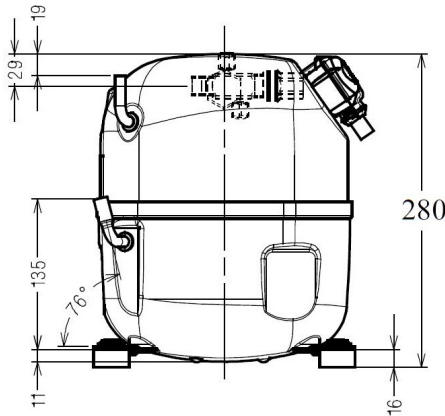
Low Temp. Commercial (BP)

208 - 220V 1~ 50 Hz

R452A / R404A / R448A / R449A

AJ2433Z-GZ3B

Conditions	Frequency	Nominal Cooling Capacity		Sound Power ISO3745 / ISO 3743-1
		Watts	BTU/h	
EN12900 / R452A	50 Hz	567	1933	57 dBA
EN12900 / R404A	50 Hz	616	2100	57 dBA
EN12900 / R448A	50 Hz	479	1634	57 dBA
EN12900 / R449A	50 Hz	479	1634	57 dBA



* EN12900 : T°Cond. 40.0°C / T°Evap. -35.0°C / T°Return gas temp.. 20.0°C
T°Subcooling. 0.0K

Certificates :



Displacement (cc)	26,2
Net Weight (Kg)	21.4
Oil Quantity (cc)	475.0
Oil Type	Polyolester
Expansion Device	Capillary_Tube/Expansion_Valve
Cooling	Fan
Main Winding (Ohm)	2.0
Start Winding (Ohm)	9.1
Current	
RLA (A)	4.3
MCC (A)	9.3
LRA (A)	32
Electrical Equipment	CSR
Overload	MST18AIW
Time Check	2.8s - 5.2s / 29 A
Open Temp	135° C
Close Temp	61° C
Optional	T0861
Start Capacitor	88 µF / 330 V
Run Capacitor	15 µF / 400 V
Potential Relay	RVA4AP**
Pick Up	300/328V
Drop Out	60/121V
Refrigerating connection for OD	
Suction Tube	12.7 (1/2")
Discharge Tube	7.9 (5/16")
Process Tube	6.35 (1/4")

Note : Tecumseh reserves the right to change information contained in this document without notification.



Tecumseh

CAJ2446Z-GZ	Tension GZ : 208 - 220V 1~ 50 Hz
--------------------	---

Les performances sont données dans les conditions EN12900 :	Gaz aspirés :	20.0 °C
Condition Dew	Sous refroidissement :	0.0 K
The performance data are in EN12900 conditions :	Return gas :	20.0 °C
Dew Condition	Subcooling :	0.0 K

50 Hz R452A									
N°2599									
4 T condensation	5 T évaporation	(°C)	-40	-35	-30	-25	-20	-15	-10
30	1 P frigorifique	(Watt)	519	723	972	1271	1627	2045	2531
	2 P absorbée	(W)	490	568	647	726	807	889	974
	3 I absorbée	(A)	2.69	3.00	3.35	3.73	4.14	4.60	5.09
40	1 P frigorifique	(Watt)	389	567	782	1041	1350	1714	2139
	2 P absorbée	(W)	472	568	665	764	866	970	1078
	3 I absorbée	(A)	2.56	2.95	3.38	3.84	4.33	4.86	5.42
50	1 P frigorifique	(Watt)		418	597	813	1072	1379	1742
	2 P absorbée	(W)		550	665	783	905	1032	1163
	3 I absorbée	(A)		2.91	3.42	3.96	4.53	5.13	5.76
60	1 P frigorifique	(Watt)				595	802	1050	1347
	2 P absorbée	(W)				788	930	1077	1231
	3 I absorbée	(A)				4.08	4.72	5.40	6.10

50 Hz R404A									
N°124NT-GZ									
4 T condensation	5 T évaporation	(°C)	-40	-35	-30	-25	-20	-15	-10
30	1 P frigorifique	(Watt)	569	786	1047	1358	1724	2148	2636
	2 P absorbée	(W)	525	610	694	778	861	943	1025
	3 I absorbée	(A)	2.88	3.22	3.59	3.99	4.42	4.87	5.36
40	1 P frigorifique	(Watt)	429	616	840	1105	1417	1780	2199
	2 P absorbée	(W)	515	615	716	819	923	1029	1136
	3 I absorbée	(A)	2.78	3.20	3.64	4.12	4.62	5.15	5.71
50	1 P frigorifique	(Watt)		454	640	860	1118	1420	1770
	2 P absorbée	(W)		603	722	844	969	1097	1229
	3 I absorbée	(A)		3.19	3.71	4.26	4.84	5.45	6.09
60	1 P frigorifique	(Watt)			451	624	828	1069	1350
	2 P absorbée	(W)			714	854	1000	1151	1307
	3 I absorbée	(A)			3.80	4.43	5.08	5.77	6.48

1 = cooling capacity 2 = power input 3 = current 4 = condensing temperature 5 = evaporating temperature

Nota : Tecumseh se réserve le droit de modifier les informations contenues dans ce document sans préavis.

Note : Tecumseh reserves the right to change information contained in this document without notification.

© 2021 Tecumseh Products Company
All rights reserved



Tecumseh

CAJ2446Z-GZ	Tension GZ : 208 - 220V 1~ 50 Hz
--------------------	---

Les performances sont données dans les conditions EN12900 :	Gaz aspirés :	20.0 °C
Condition Dew	Sous refroidissement :	0.0 K
The performance data are in EN12900 conditions :	Return gas :	20.0 °C
Dew Condition	Subcooling :	0.0 K

50 Hz R448A (*)								
N°2961								
4 T condensation	5 T évaporation	(°C)	-35	-30	-25	-20	-15	-10
30	1 P frigorifique	(Watt)	612	858	1157	1516	1940	2435
	2 P absorbée	(W)	527	606	684	763	843	924
	3 I absorbée	(A)	2.79	3.13	3.51	3.92	4.36	4.83
40	1 P frigorifique	(Watt)	479	690	949	1260	1631	2067
	2 P absorbée	(W)	533	628	724	821	919	1020
	3 I absorbée	(A)	2.77	3.19	3.64	4.11	4.60	5.13
50	1 P frigorifique	(Watt)	357	536	755	1022	1341	1719
	2 P absorbée	(W)	522	634	748	865	984	1106
	3 I absorbée	(A)	2.76	3.26	3.78	4.32	4.89	5.47
60	1 P frigorifique	(Watt)			586	809	1079	1401
	2 P absorbée	(W)			758	895	1035	1180
	3 I absorbée	(A)			3.92	4.55	5.19	5.85

50 Hz R449A (*)								
N°2705								
4 T condensation	5 T évaporation	(°C)	-35	-30	-25	-20	-15	-10
30	1 P frigorifique	(Watt)	612	858	1157	1516	1940	2435
	2 P absorbée	(W)	527	606	684	763	843	924
	3 I absorbée	(A)	2.79	3.13	3.51	3.92	4.36	4.83
40	1 P frigorifique	(Watt)	479	690	949	1260	1631	2067
	2 P absorbée	(W)	533	628	724	821	919	1020
	3 I absorbée	(A)	2.77	3.19	3.64	4.11	4.60	5.13
50	1 P frigorifique	(Watt)	357	536	755	1022	1341	1719
	2 P absorbée	(W)	522	634	748	865	984	1106
	3 I absorbée	(A)	2.76	3.26	3.78	4.32	4.89	5.47
60	1 P frigorifique	(Watt)			586	809	1079	1401
	2 P absorbée	(W)			758	895	1035	1180
	3 I absorbée	(A)			3.92	4.55	5.19	5.85

1 = cooling capacity 2 = power input 3 = current 4 = condensing temperature 5 = evaporating temperature

(*) Veuillez vous référer strictement aux Recommandations d'Utilisation et Bulletins Marketing Tecumseh du fait de la température de reflux élevée pour les applications LBP.
 (*) Due to very high discharge temperature especially on LBP conditions, please strictly refer to Tecumseh Guidelines & Marketing Bulletin when using this refrigerant.

Nota : Tecumseh se réserve le droit de modifier les informations contenues dans ce document sans préavis.
Note : Tecumseh reserves the right to change information contained in this document without notification.

© 2021 Tecumseh Products Company
All rights reserved