



Compressor  
Voltage Code : TZ

**TAG5546E**

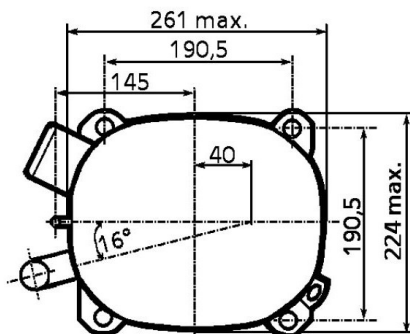
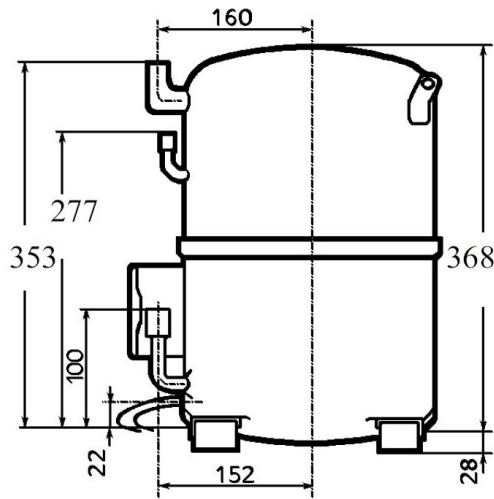
Air Conditioning & Heating (CA)

400V 3~ 50Hz / 440V 3~ 60 Hz

R22

AGB5546ETZ

| Conditions    | Frequency     | Nominal Cooling Capacity |               | Sound Power<br>ISO3745 / ISO 3743-1 |
|---------------|---------------|--------------------------|---------------|-------------------------------------|
|               |               | Watts                    | BTU/h         |                                     |
| EN12900 / R22 | 50 Hz / 60 Hz | 10202 / 12006            | 34790 / 40941 | 76 dBA                              |



|  |                                |
|--|--------------------------------|
| <b>Displacement (cc)</b>               | 90,2                           |
| <b>Net Weight (Kg)</b>                 | 42.5                           |
| <b>Oil Quantity (cc)</b>               | 1760.0                         |
| <b>Oil Type</b>                        | Mineral                        |
| <b>Expansion Device</b>                | Capillary_Tube/Expansion_Valve |
| <b>Cooling</b>                         | Fan                            |
| <b>Main Winding (Ohm)</b>              | 4.3                            |
| <b>Current</b>                         |                                |
| RLA (A)                                | 6.6   7.5                      |
| MCC (A)                                | 10   10                        |
| LRA (A)                                | 40   44                        |
| <b>Electrical Equipment</b>            | TRI                            |
| <b>Overload</b>                        | Interne                        |
| <b>Refrigerating connection for OD</b> |                                |
| Suction Tube                           | 22.2 (7/8")                    |
| Discharge Tube                         | 12.7 (1/2")                    |
| Process Tube                           | 6.35 (1/4")                    |

\* EN12900 : T°Cond. 50.0°C / T°Evap. 5.0°C / T°Superheat. 10.0°C  
T°Subcooling. 0.0K

Certificates :



Note : Tecumseh reserves the right to change information contained in this document without notification.



**Tecumseh**

|                 |  |
|-----------------|--|
| <b>TAG5546E</b> | <b>Tension TZ : 400V 3~ 50Hz / 440V 3~ 60 Hz</b> |
|-----------------|--|

|  |                        |        |
|--|------------------------|--------|
| Les performances sont données dans les <b>conditions EN12900</b> : | Surchauffe :           | 10.0 K |
| Condition Dew  | Sous refroidissement : | 0.0 K  |
| The performance data are in <b>EN12900 conditions</b> :            | Superheat :            | 10.0 K |
| Dew Condition  | Subcooling :           | 0.0 K  |

| <b>50 Hz R22</b>   |                    |        |     |     |     |      |      |      |       |       |                  |
|--------------------|--------------------|--------|-----|-----|-----|------|------|------|-------|-------|------------------|
|                    |                    |        |     |     |     |      |      |      |       |       | <b>N°337CL-T</b> |
| 4   T condensation | 5   T évaporation  | (°C)   | -25 | -20 | -15 | -10  | -5   | 0    | 5     | 10    | 15               |
| <b>40</b>          | 1   P frigorifique | (Watt) |     |     |     | 5583 | 7362 | 9543 | 12127 | 15113 | 18502            |
|                    | 2   P absorbée     | (W)    |     |     |     | 2375 | 2697 | 3015 | 3331  | 3644  | 3953             |
|                    | 3   I absorbée     | (A)    |     |     |     | 4.86 | 5.21 | 5.57 | 5.94  | 6.34  | 6.74             |
| <b>50</b>          | 1   P frigorifique | (Watt) |     |     |     |      | 6031 | 7934 | 10202 | 12837 | 15837            |
|                    | 2   P absorbée     | (W)    |     |     |     |      | 2850 | 3258 | 3663  | 4066  | 4465             |
|                    | 3   I absorbée     | (A)    |     |     |     |      | 5.38 | 5.89 | 6.42  | 6.96  | 7.51             |
| <b>60</b>          | 1   P frigorifique | (Watt) |     |     |     |      |      | 6397 | 8358  | 10647 | 13265            |
|                    | 2   P absorbée     | (W)    |     |     |     |      |      | 3502 | 3996  | 4488  | 4976             |
|                    | 3   I absorbée     | (A)    |     |     |     |      |      | 6.22 | 6.89  | 7.58  | 8.28             |

| <b>60 Hz R22</b>   |                    |        |     |     |     |      |      |       |       |       |                  |
|--------------------|--------------------|--------|-----|-----|-----|------|------|-------|-------|-------|------------------|
|                    |                    |        |     |     |     |      |      |       |       |       | <b>N°337CL-T</b> |
| 4   T condensation | 5   T évaporation  | (°C)   | -25 | -20 | -15 | -10  | -5   | 0     | 5     | 10    | 15               |
| <b>40</b>          | 1   P frigorifique | (Watt) |     |     |     | 6635 | 8722 | 11267 | 14270 | 17732 | 21653            |
|                    | 2   P absorbée     | (W)    |     |     |     | 3076 | 3534 | 3959  | 4349  | 4706  | 5028             |
|                    | 3   I absorbée     | (A)    |     |     |     | 5.02 | 5.66 | 6.24  | 6.76  | 7.21  | 7.61             |
| <b>50</b>          | 1   P frigorifique | (Watt) |     |     |     |      | 7145 | 9368  | 12006 | 15062 | 18535            |
|                    | 2   P absorbée     | (W)    |     |     |     |      | 3735 | 4277  | 4782  | 5251  | 5683             |
|                    | 3   I absorbée     | (A)    |     |     |     |      | 5.85 | 6.61  | 7.30  | 7.93  | 8.49             |
| <b>60</b>          | 1   P frigorifique | (Watt) |     |     |     |      |      | 7554  | 9836  | 12493 | 15526            |
|                    | 2   P absorbée     | (W)    |     |     |     |      |      | 4598  | 5217  | 5796  | 6337             |
|                    | 3   I absorbée     | (A)    |     |     |     |      |      | 6.97  | 7.83  | 8.63  | 9.37             |

1 = cooling capacity 2 = power input 3 = current 4 = condensing temperature 5 = evaporating temperature

**Nota : Tecumseh se réserve le droit de modifier les informations contenues dans ce document sans préavis.**

**Note : Tecumseh reserves the right to change information contained in this document without notification.**

© 2021 Tecumseh Products Company  
All rights reserved