



Compressor  
Voltage Code : TZ

TFH5527C

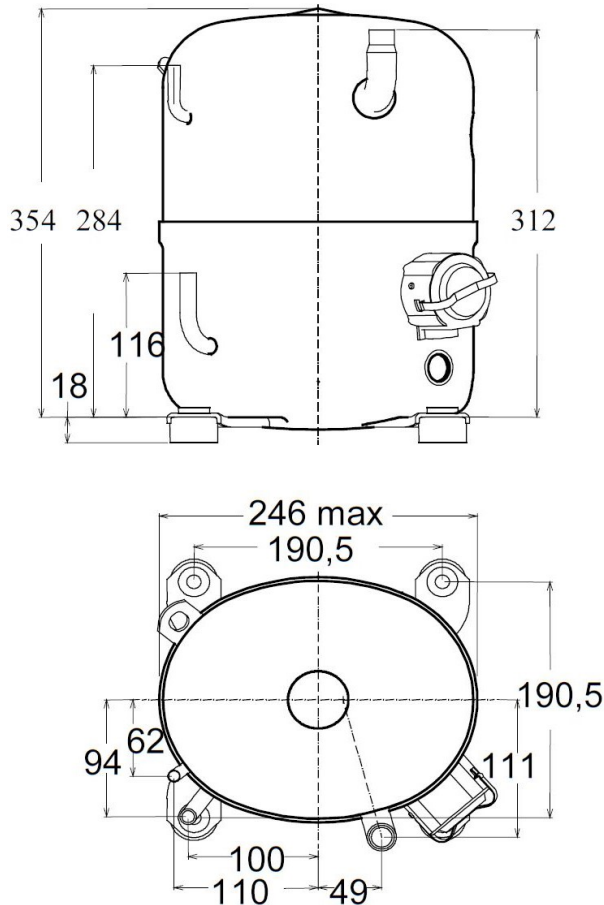
Air Conditioning & Heating (CA)

400V 3~ 50Hz / 440V 3~ 60 Hz

R407C

AHC5527CTZ

Conditions	Frequency	Nominal Cooling Capacity		Sound Power ISO3745 / ISO 3743-1
		Watts	BTU/h	
EN12900 / R407C	50 Hz / 60 Hz	5819 / 6951	19842 / 23704	76 dBA



<b>Displacement (cc)</b>	49,1
<b>Net Weight (Kg)</b>	30.6
<b>Oil Quantity (cc)</b>	1330.0
<b>Oil Type</b>	Polyolester
<b>Expansion Device</b>	Capillary_Tube/Expansion_Valve
<b>Cooling</b>	Fan
<b>Main Winding (Ohm)</b>	6.28
<b>Current</b>	
RLA (A)	4.2   4.6
MCC (A)	7   7.2
LRA (A)	24.8   25
<b>Electrical Equipment</b>	TRI
<b>Overload</b>	Interne
<b>Refrigerating connection for OD</b>	
Suction Tube	15.9 (5/8")
Discharge Tube	9.5 (3/8")
Process Tube	6.35 (1/4")

\* EN12900 : T°Cond. 50.0°C / T°Evap. 5.0°C / T°Superheat. 10.0°C  
T°Subcooling. 0.0K

Certificates :



Note : Tecumseh reserves the right to change information contained in this document without notification.



**Tecumseh**

<b>TFH5527C</b>	<b>Tension TZ : 400V 3~ 50Hz / 440V 3~ 60 Hz</b>
-----------------	--

Les performances sont données dans les <b>conditions EN12900</b> :	Surchauffe :	10.0 K
Condition Mid	Sous refroidissement :	0.0 K
The performance data are in <b>EN12900 conditions</b> :	Superheat :	10.0 K
Mid Condition	Subcooling :	0.0 K

<b>50 Hz R407C</b>											
											<b>N°345UL-T</b>
4   T condensation	5   T évaporation	(°C)	-25	-20	-15	-10	-5	0	5	10	15
<b>40</b>	1   P frigorifique	(Watt)				3238	4279	5538	7042	8820	10898
	2   P absorbée	(W)				1655	1818	1981	2145	2312	2482
	3   I absorbée	(A)				3.52	3.72	3.92	4.13	4.33	4.53
<b>50</b>	1   P frigorifique	(Watt)					3459	4529	5819	7358	9174
	2   P absorbée	(W)					1953	2150	2345	2541	2738
	3   I absorbée	(A)					3.85	4.12	4.38	4.64	4.90
<b>60</b>	1   P frigorifique	(Watt)						3556	4624	5917	7462
	2   P absorbée	(W)						2320	2559	2795	3030
	3   I absorbée	(A)						4.26	4.59	4.91	5.23

<b>60 Hz R407C</b>											
											<b>N°345UL-T</b>
4   T condensation	5   T évaporation	(°C)	-25	-20	-15	-10	-5	0	5	10	15
<b>40</b>	1   P frigorifique	(Watt)				3968	5232	6671	8311	10176	12290
	2   P absorbée	(W)				2056	2300	2519	2723	2922	3126
	3   I absorbée	(A)				3.53	3.82	4.11	4.39	4.66	4.93
<b>50</b>	1   P frigorifique	(Watt)					4202	5487	6951	8620	10518
	2   P absorbée	(W)					2408	2693	2950	3189	3420
	3   I absorbée	(A)					4.01	4.35	4.68	5.00	5.32
<b>60</b>	1   P frigorifique	(Watt)						4310	5576	7026	8683
	2   P absorbée	(W)						2818	3151	3452	3732
	3   I absorbée	(A)						4.67	5.05	5.42	5.78

1 = cooling capacity 2 = power input 3 = current 4 = condensing temperature 5 = evaporating temperature

**Nota : Tecumseh se réserve le droit de modifier les informations contenues dans ce document sans préavis.**  
**Note : Tecumseh reserves the right to change information contained in this document without notification.**

© 2021 Tecumseh Products Company  
All rights reserved