



Compressor  
Voltage Code : TZ

TFH5531C

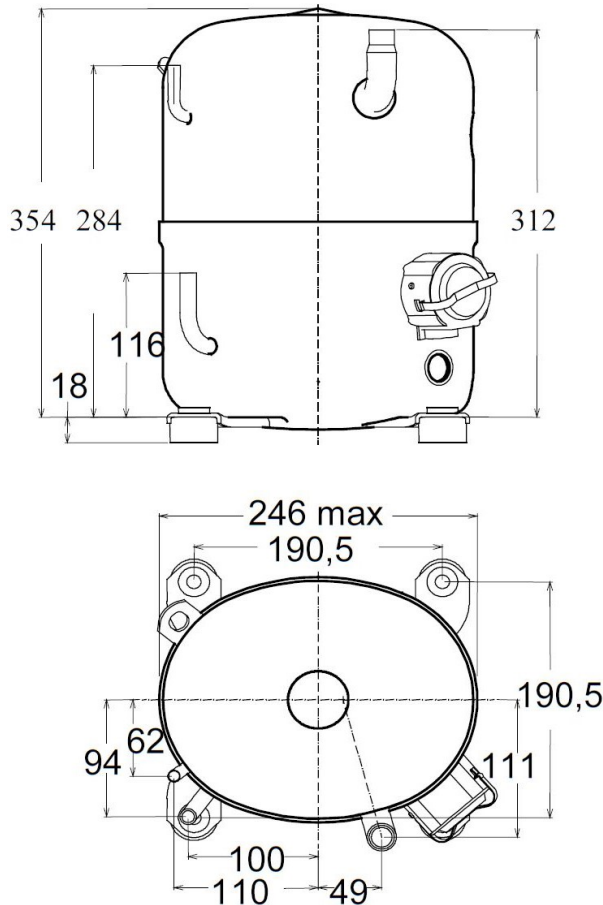
Air Conditioning & Heating (CA)

400V 3~ 50Hz / 440V 3~ 60 Hz

R407C

AHC5531CTZ

Conditions	Frequency	Nominal Cooling Capacity		Sound Power ISO3745 / ISO 3743-1
		Watts	BTU/h	
EN12900 / R407C	50 Hz / 60 Hz	6610 / 7496	22539 / 25561	74 dBA



<b>Displacement (cc)</b>	56,65
<b>Net Weight (Kg)</b>	31.9
<b>Oil Quantity (cc)</b>	1330.0
<b>Oil Type</b>	Polyolester
<b>Expansion Device</b>	Capillary_Tube/Expansion_Valve
<b>Cooling</b>	Fan
<b>Current</b>	
RLA (A)	4.7   4.8
MCC (A)	8.4   8.5
LRA (A)	26.5   30.5
<b>Electrical Equipment</b>	TRI
<b>Overload</b>	Interne
<b>Refrigerating connection for OD</b>	
Suction Tube	19 (3/4")
Discharge Tube	9.5 (3/8")
Process Tube	6.35 (1/4")

\* EN12900 : T°Cond. 50.0°C / T°Evap. 5.0°C / T°Superheat. 10.0°C  
T°Subcooling. 0.0K

Certificates :



Note : Tecumseh reserves the right to change information contained in this document without notification.



**Tecumseh**

<b>TFH5531C</b>	<b>Tension TZ : 400V 3~ 50Hz / 440V 3~ 60 Hz</b>
-----------------	--

Les performances sont données dans les <b>conditions EN12900</b> :	Surchauffe :	10.0 K
Condition Mid	Sous refroidissement :	0.0 K
The performance data are in <b>EN12900 conditions</b> :	Superheat :	10.0 K
Mid Condition	Subcooling :	0.0 K

<b>50 Hz R407C</b>											
											<b>N°345WL-T</b>
4   T condensation	5   T évaporation	(°C)	-25	-20	-15	-10	-5	0	5	10	15
<b>40</b>	1   P frigorifique	(Watt)				3819	4982	6364	7988	9881	12067
	2   P absorbée	(W)				2340	2638	2947	3258	3563	3853
	3   I absorbée	(A)				3.71	3.99	4.29	4.61	4.94	5.30
<b>50</b>	1   P frigorifique	(Watt)					4014	5202	6610	8264	10189
	2   P absorbée	(W)					2721	3062	3420	3788	4157
	3   I absorbée	(A)					4.11	4.46	4.82	5.20	5.60
<b>60</b>	1   P frigorifique	(Watt)						4020	5191	6585	8228
	2   P absorbée	(W)						3193	3579	3991	4419
	3   I absorbée	(A)						4.69	5.10	5.53	5.98

<b>60 Hz R407C</b>											
											<b>N°345WL-T</b>
4   T condensation	5   T évaporation	(°C)	-25	-20	-15	-10	-5	0	5	10	15
<b>40</b>	1   P frigorifique	(Watt)				4390	5627	7192	9147	11555	14479
	2   P absorbée	(W)				2981	3358	3751	4163	4600	5066
	3   I absorbée	(A)				3.98	4.37	4.81	5.32	5.88	6.49
<b>50</b>	1   P frigorifique	(Watt)					4600	5877	7496	9519	12008
	2   P absorbée	(W)					3456	3885	4337	4815	5324
	3   I absorbée	(A)					4.27	4.79	5.38	6.02	6.71
<b>60</b>	1   P frigorifique	(Watt)						4666	5939	7566	9612
	2   P absorbée	(W)						4007	4488	4998	5541
	3   I absorbée	(A)						4.43	5.10	5.82	6.59

1 = cooling capacity 2 = power input 3 = current 4 = condensing temperature 5 = evaporating temperature

**Nota : Tecumseh se réserve le droit de modifier les informations contenues dans ce document sans préavis.**  
**Note : Tecumseh reserves the right to change information contained in this document without notification.**

© 2021 Tecumseh Products Company  
All rights reserved