



Compressor
Voltage Code : FZ

FH4524Z

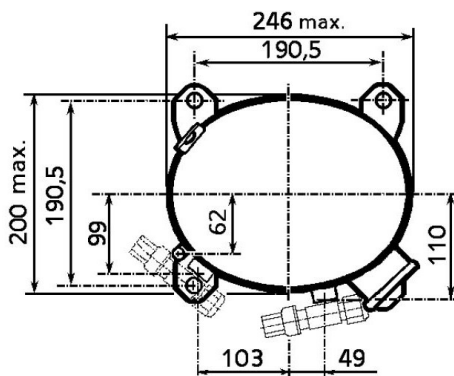
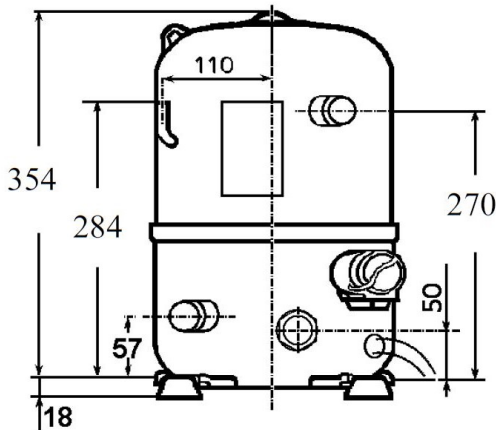
High Temp. Commercial (HP)

220 - 240V 1~ 50 Hz

R452A / R404A / R448A / R449A

AHC4524ZFZ

Conditions	Frequency	Nominal Cooling Capacity		Sound Power ISO3745 / ISO 3743-1
		Watts	BTU/h	
EN12900_MHP / R452A	50 Hz	2957	10085	74 dBA
EN12900_MHP / R404A	50 Hz	3042	10372	74 dBA
EN12900_MHP / R448A	50 Hz	2807	9573	74 dBA
EN12900_MHP / R449A	50 Hz	2807	9573	74 dBA



Displacement (cc)	43,5
Net Weight (Kg)	34.2
Oil Quantity (cc)	1330.0
Oil Type	Polyolester
Expansion Device	Capillary_Tube/Expansion_Valve
Cooling	Fan
Main Winding (Ohm)	1.2
Start Winding (Ohm)	3.8
Current	
RLA (A)	10.7
MCC (A)	18.1
LRA (A)	49
Electrical Equipment	CSR
Overload	Interne
Start Capacitor	100 µF / 330 V
Run Capacitor	30 µF / 400 V
Potential Relay	RVA4I**
Pick Up	204/233V
Drop Out	50/110V
Optional	3ARR3*6AU*
Refrigerating connection for OD	
Suction Tube	15.9 (5/8")
Discharge Tube	12.7 (1/2")
Process Tube	6.35 (1/4")

* EN12900_MHP : T°Cond. 45.0°C / T°Evap. -10.0°C / T°Return gas temp.. 20.0°C
T°Subcooling. 0.0K

Certificates :



Note : Tecumseh reserves the right to change information contained in this document without notification.



Tecumseh

FH4524Z	Tension FZ : 220 - 240V 1~ 50 Hz
----------------	---

Les performances sont données dans les **conditions EN12900_MHP** :
 Condition Dew
 The performance data are in **EN12900_MHP conditions** :
 Dew Condition

Gaz aspirés : 20.0 °C
 Sous refroidissement : 0.0 K
 Return gas : 20.0 °C
 Subcooling : 0.0 K

© 2021 Tecumseh Products Company
All rights reserved

50 Hz R452A

N°2110

4 T condensation	5 T évaporation	(°C)	-25	-20	-15	-10	-5	0	5	10	15
30	1 P frigorifique	(Watt)	1728	2385	3149	4038	5069	6259	7626	9187	10958
	2 P absorbée	(W)	1108	1265	1406	1535	1654	1767	1878	1989	2105
	3 I absorbée	(A)	5.04	5.70	6.31	6.88	7.40	7.87	8.30	8.67	9.00
40	1 P frigorifique	(Watt)		1846	2540	3332	4241	5283	6476	7837	9383
	2 P absorbée	(W)		1271	1456	1626	1784	1934	2077	2219	2362
	3 I absorbée	(A)		5.68	6.49	7.26	7.99	8.67	9.30	9.88	10.4
50	1 P frigorifique	(Watt)			1892	2574	3345	4225	5229	6375	7681
	2 P absorbée	(W)			1454	1674	1878	2071	2256	2436	2614
	3 I absorbée	(A)			6.47	7.44	8.37	9.26	10.1	10.9	11.6
60	1 P frigorifique	(Watt)				1797	2417	3119	3920	4837	5889
	2 P absorbée	(W)				1673	1932	2177	2410	2636	2856
	3 I absorbée	(A)				7.41	8.55	9.65	10.7	11.7	12.7

50 Hz R404A



N°226ET-F

4 T condensation	5 T évaporation	(°C)	-25	-20	-15	-10	-5	0	5	10	15
30	1 P frigorifique	(Watt)	1843	2514	3290	4185	5217	6402	7756	9297	11040
	2 P absorbée	(W)	1174	1335	1478	1608	1727	1839	1947	2054	2164
	3 I absorbée	(A)	5.33	6.01	6.64	7.21	7.73	8.19	8.60	8.96	9.26
40	1 P frigorifique	(Watt)	1320	1944	2644	3437	4338	5364	6532	7858	9358
	2 P absorbée	(W)	1138	1347	1535	1707	1865	2012	2152	2289	2425
	3 I absorbée	(A)	5.13	6.01	6.85	7.62	8.35	9.02	9.63	10.2	10.7
50	1 P frigorifique	(Watt)		1353	1964	2639	3395	4249	5216	6313	7557
	2 P absorbée	(W)		1299	1541	1762	1966	2156	2337	2510	2680
	3 I absorbée	(A)		5.81	6.85	7.83	8.76	9.64	10.5	11.2	11.9
60	1 P frigorifique	(Watt)			1288	1832	2430	3097	3849	4704	5678
	2 P absorbée	(W)			1492	1770	2028	2269	2497	2715	2926
	3 I absorbée	(A)			6.65	7.84	8.98	10.1	11.1	12.1	13.0

1 = cooling capacity 2 = power input 3 = current 4 = condensing temperature 5 = evaporating temperature

Nota : Tecumseh se réserve le droit de modifier les informations contenues dans ce document sans préavis.

Note : Tecumseh reserves the right to change information contained in this document without notification.



Tecumseh

FH4524Z	Tension FZ : 220 - 240V 1~ 50 Hz
----------------	---

Les performances sont données dans les conditions EN12900_MHP :	Gaz aspirés :	20.0 °C
Condition Dew	Sous refroidissement :	0.0 K
The performance data are in EN12900_MHP conditions :	Return gas :	20.0 °C
Dew Condition	Subcooling :	0.0 K

50 Hz R448A (*)											
											N°2836
4 T condensation	5 T évaporation	(°C)	-25	-20	-15	-10	-5	0	5	10	15
30	1 P frigorifique	(Watt)	1522	2154	2897	3768	4787	5973	7344	8920	10719
	2 P absorbée	(W)	1033	1178	1310	1433	1549	1660	1767	1873	1980
	3 I absorbée	(A)	4.69	5.30	5.88	6.43	6.93	7.39	7.81	8.17	8.47
40	1 P frigorifique	(Watt)		1676	2354	3139	4050	5106	6325	7726	9328
	2 P absorbée	(W)		1193	1366	1527	1678	1822	1959	2093	2226
	3 I absorbée	(A)		5.33	6.09	6.82	7.51	8.16	8.77	9.32	9.82
50	1 P frigorifique	(Watt)			1781	2470	3263	4178	5234	6451	7846
	2 P absorbée	(W)			1373	1584	1782	1969	2148	2321	2490
	3 I absorbée	(A)			6.11	7.04	7.94	8.80	9.62	10.4	11.1
60	1 P frigorifique	(Watt)				1801	2465	3229	4112	5134	6312
	2 P absorbée	(W)				1590	1846	2089	2321	2544	2760
	3 I absorbée	(A)				7.05	8.17	9.26	10.3	11.3	12.3

50 Hz R449A (*)											
											N°2225
4 T condensation	5 T évaporation	(°C)	-25	-20	-15	-10	-5	0	5	10	15
30	1 P frigorifique	(Watt)	1522	2154	2897	3768	4787	5973	7344	8920	10719
	2 P absorbée	(W)	1033	1178	1310	1433	1549	1660	1767	1873	1980
	3 I absorbée	(A)	4.69	5.30	5.88	6.43	6.93	7.39	7.81	8.17	8.47
40	1 P frigorifique	(Watt)		1676	2354	3139	4050	5106	6325	7726	9328
	2 P absorbée	(W)		1193	1366	1527	1678	1822	1959	2093	2226
	3 I absorbée	(A)		5.33	6.09	6.82	7.51	8.16	8.77	9.32	9.82
50	1 P frigorifique	(Watt)			1781	2470	3263	4178	5234	6451	7846
	2 P absorbée	(W)			1373	1584	1782	1969	2148	2321	2490
	3 I absorbée	(A)			6.11	7.04	7.94	8.80	9.62	10.4	11.1
60	1 P frigorifique	(Watt)				1801	2465	3229	4112	5134	6312
	2 P absorbée	(W)				1590	1846	2089	2321	2544	2760
	3 I absorbée	(A)				7.05	8.17	9.26	10.3	11.3	12.3

1 = cooling capacity 2 = power input 3 = current 4 = condensing temperature 5 = evaporating temperature

(*) Veuillez vous référer strictement aux Recommandations d'Utilisation et Bulletins Marketing Tecumseh du fait de la température de refoulement élevée pour les applications LBP.
 (*) Due to very high discharge temperature especially on LBP conditions, please strictly refer to Tecumseh Guidelines & Marketing Bulletin when using this refrigerant.

Nota : Tecumseh se réserve le droit de modifier les informations contenues dans ce document sans préavis.

Note : Tecumseh reserves the right to change information contained in this document without notification.

© 2021 Tecumseh Products Company
All rights reserved