



# Tecumseh

Compressor  
Voltage Code : FZ

## FH4531Z

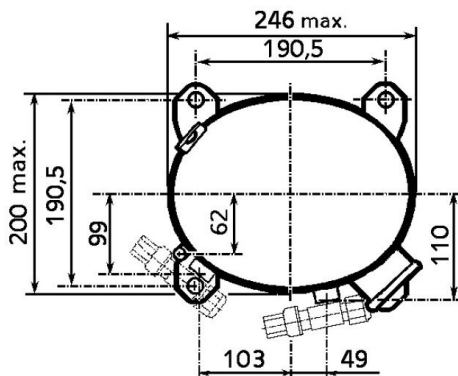
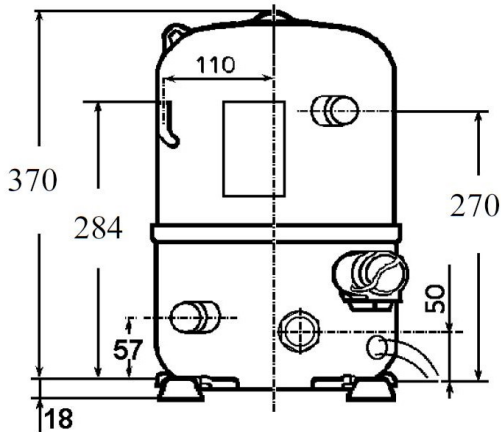
High Temp. Commercial (HP)

220 - 240V 1~ 50 Hz

R452A / R404A / R448A / R449A

AHC4531ZFZ

| Conditions          | Frequency | Nominal Cooling Capacity |       | Sound Power<br>ISO3745 / ISO 3743-1 |
|---------------------|-----------|--------------------------|-------|-------------------------------------|
|                     |           | Watts                    | BTU/h |                                     |
| EN12900_MHP / R452A | 50 Hz     | 3931                     | 13404 | 75 dBA                              |
| EN12900_MHP / R404A | 50 Hz     | 4042                     | 13784 | 75 dBA                              |
| EN12900_MHP / R448A | 50 Hz     | 3732                     | 12726 | 75 dBA                              |
| EN12900_MHP / R449A | 50 Hz     | 3732                     | 12726 | 75 dBA                              |



|  |                                |
|--|--------------------------------|
| <b>Displacement (cc)</b>               | 56,6                           |
| <b>Net Weight (Kg)</b>                 | 36.0                           |
| <b>Oil Quantity (cc)</b>               | 1330.0                         |
| <b>Oil Type</b>                        | Polyolester                    |
| <b>Expansion Device</b>                | Capillary_Tube/Expansion_Valve |
| <b>Cooling</b>                         | Fan                            |
| <b>Main Winding (Ohm)</b>              | 0.9                            |
| <b>Start Winding (Ohm)</b>             | 3.2                            |
| <b>Current</b>                         |                                |
| RLA (A)                                | 14.1                           |
| MCC (A)                                | 22.4                           |
| LRA (A)                                | 66                             |
| <b>Electrical Equipment</b>            | CSR                            |
| <b>Overload</b>                        | Interne                        |
| <b>Start Capacitor</b>                 | 156 µF / 330 V                 |
| <b>Run Capacitor</b>                   | 35 µF / 400 V                  |
| <b>Potential Relay</b>                 | RVA6M**                        |
| Pick Up                                | 239/268V                       |
| Drop Out                               | 60/135V                        |
| Optional                               | 3ARR3*4AA*                     |
| <b>Refrigerating connection for OD</b> |                                |
| Suction Tube                           | 22.2 (7/8")                    |
| Discharge Tube                         | 12.7 (1/2")                    |
| Process Tube                           | 6.35 (1/4")                    |

\* EN12900\_MHP : T°Cond. 45.0°C / T°Evap. -10.0°C / T°Return gas temp.. 20.0°C  
T°Subcooling. 0.0K

Certificates :



Note : Tecumseh reserves the right to change information contained in this document without notification.



**Tecumseh**

|                |   |
|----------------|---|
| <b>FH4531Z</b> | <b>Tension FZ : 220 - 240V 1~ 50 Hz</b> |
|----------------|---|

Les performances sont données dans les **conditions EN12900\_MHP** :  
 Condition Dew  
 The performance data are in **EN12900\_MHP conditions** :  
 Dew Condition

Gaz aspirés : 20.0 °C  
 Sous refroidissement : 0.0 K  
 Return gas : 20.0 °C  
 Subcooling : 0.0 K

© 2021 Tecumseh Products Company  
All rights reserved

**50 Hz R452A**

**N°2119**

| 4   T condensation | 5   T évaporation  | (°C)   | -25  | -20  | -15  | -10  | -5   | 0    | 5    | 10    | 15    |
|--------------------|--------------------|--------|------|------|------|------|------|------|------|-------|-------|
| <b>30</b>          | 1   P frigorifique | (Watt) | 2265 | 3269 | 4307 | 5419 | 6647 | 8031 | 9611 | 11427 | 13521 |
|                    | 2   P absorbée     | (W)    | 1368 | 1627 | 1831 | 1998 | 2143 | 2284 | 2437 | 2618  | 2843  |
|                    | 3   I absorbée     | (A)    | 6.11 | 7.11 | 8.02 | 8.84 | 9.56 | 10.2 | 10.7 | 11.2  | 11.6  |
| <b>40</b>          | 1   P frigorifique | (Watt) |      | 2331 | 3379 | 4451 | 5589 | 6832 | 8221 | 9797  | 11601 |
|                    | 2   P absorbée     | (W)    |      | 1551 | 1860 | 2111 | 2322 | 2509 | 2688 | 2877  | 3091  |
|                    | 3   I absorbée     | (A)    |      | 6.92 | 8.12 | 9.23 | 10.2 | 11.2 | 12.0 | 12.8  | 13.4  |
| <b>50</b>          | 1   P frigorifique | (Watt) |      |      | 2359 | 3391 | 4438 | 5541 | 6740 | 8076  | 9589  |
|                    | 2   P absorbée     | (W)    |      |      | 1770 | 2132 | 2435 | 2695 | 2928 | 3151  | 3380  |
|                    | 3   I absorbée     | (A)    |      |      | 7.90 | 9.31 | 10.6 | 11.9 | 13.0 | 14.1  | 15.0  |
| <b>60</b>          | 1   P frigorifique | (Watt) |      |      |      | 2265 | 3223 | 4186 | 5195 | 6290  | 7513  |
|                    | 2   P absorbée     | (W)    |      |      |      | 2035 | 2457 | 2817 | 3130 | 3414  | 3685  |
|                    | 3   I absorbée     | (A)    |      |      |      | 9.08 | 10.7 | 12.2 | 13.7 | 15.0  | 16.3  |

**50 Hz R404A**



**N°226JT-F**

| 4   T condensation | 5   T évaporation  | (°C)   | -25  | -20  | -15  | -10  | -5   | 0    | 5    | 10    | 15    |
|--------------------|--------------------|--------|------|------|------|------|------|------|------|-------|-------|
| <b>30</b>          | 1   P frigorifique | (Watt) | 2415 | 3444 | 4498 | 5616 | 6841 | 8214 | 9774 | 11564 | 13623 |
|                    | 2   P absorbée     | (W)    | 1450 | 1716 | 1925 | 2093 | 2239 | 2377 | 2526 | 2703  | 2924  |
|                    | 3   I absorbée     | (A)    | 6.48 | 7.51 | 8.43 | 9.26 | 9.99 | 10.6 | 11.1 | 11.6  | 11.9  |
| <b>40</b>          | 1   P frigorifique | (Watt) | 1367 | 2456 | 3517 | 4590 | 5716 | 6937 | 8292 | 9823  | 11570 |
|                    | 2   P absorbée     | (W)    | 1252 | 1645 | 1960 | 2215 | 2427 | 2611 | 2786 | 2968  | 3174  |
|                    | 3   I absorbée     | (A)    | 6.00 | 7.33 | 8.56 | 9.68 | 10.7 | 11.6 | 12.5 | 13.2  | 13.8  |
| <b>50</b>          | 1   P frigorifique | (Watt) |      | 1380 | 2449 | 3477 | 4505 | 5573 | 6724 | 7997  | 9433  |
|                    | 2   P absorbée     | (W)    |      | 1427 | 1876 | 2244 | 2548 | 2806 | 3033 | 3247  | 3465  |
|                    | 3   I absorbée     | (A)    |      | 6.84 | 8.37 | 9.80 | 11.1 | 12.3 | 13.5 | 14.5  | 15.4  |
| <b>60</b>          | 1   P frigorifique | (Watt) |      |      | 1324 | 2308 | 3238 | 4156 | 5103 | 6118  | 7244  |
|                    | 2   P absorbée     | (W)    |      |      | 1646 | 2155 | 2579 | 2936 | 3243 | 3517  | 3774  |
|                    | 3   I absorbée     | (A)    |      |      | 7.88 | 9.61 | 11.2 | 12.8 | 14.2 | 15.5  | 16.7  |

1 = cooling capacity 2 = power input 3 = current 4 = condensing temperature 5 = evaporating temperature

**Nota : Tecumseh se réserve le droit de modifier les informations contenues dans ce document sans préavis.**

**Note : Tecumseh reserves the right to change information contained in this document without notification.**



**Tecumseh**

|                |   |
|----------------|---|
| <b>FH4531Z</b> | <b>Tension FZ : 220 - 240V 1~ 50 Hz</b> |
|----------------|---|

|  |                        |         |
|--|------------------------|---------|
| Les performances sont données dans les <b>conditions EN12900_MHP</b> : | Gaz aspirés :          | 20.0 °C |
| Condition Dew  | Sous refroidissement : | 0.0 K   |
| The performance data are in <b>EN12900_MHP conditions</b> :            | Return gas :           | 20.0 °C |
| Dew Condition  | Subcooling :           | 0.0 K   |

| <b>50 Hz R448A (*)</b> |                    |        |      |      |      |      |      |      |      |       |               |
|------------------------|--------------------|--------|------|------|------|------|------|------|------|-------|---------------|
|                        |                    |        |      |      |      |      |      |      |      |       | <b>N°2845</b> |
| 4   T condensation     | 5   T évaporation  | (°C)   | -25  | -20  | -15  | -10  | -5   | 0    | 5    | 10    | 15            |
| <b>30</b>              | 1   P frigorifique | (Watt) | 1994 | 2955 | 3963 | 5057 | 6277 | 7664 | 9257 | 11096 | 13222         |
|                        | 2   P absorbée     | (W)    | 1276 | 1514 | 1706 | 1866 | 2008 | 2145 | 2293 | 2465  | 2675          |
|                        | 3   I absorbée     | (A)    | 5.70 | 6.62 | 7.47 | 8.26 | 8.96 | 9.58 | 10.1 | 10.5  | 10.9          |
| <b>40</b>              | 1   P frigorifique | (Watt) |      | 2114 | 3133 | 4195 | 5338 | 6603 | 8030 | 9659  | 11530         |
|                        | 2   P absorbée     | (W)    |      | 1456 | 1744 | 1982 | 2184 | 2364 | 2536 | 2714  | 2912          |
|                        | 3   I absorbée     | (A)    |      | 6.49 | 7.61 | 8.66 | 9.64 | 10.5 | 11.3 | 12.1  | 12.7          |
| <b>50</b>              | 1   P frigorifique | (Watt) |      |      | 2219 | 3255 | 4328 | 5479 | 6747 | 8173  | 9796          |
|                        | 2   P absorbée     | (W)    |      |      | 1672 | 2018 | 2310 | 2562 | 2789 | 3003  | 3220          |
|                        | 3   I absorbée     | (A)    |      |      | 7.46 | 8.81 | 10.1 | 11.3 | 12.4 | 13.4  | 14.3          |
| <b>60</b>              | 1   P frigorifique | (Watt) |      |      |      | 2276 | 3286 | 4329 | 5445 | 6674  | 8057          |
|                        | 2   P absorbée     | (W)    |      |      |      | 1935 | 2348 | 2703 | 3014 | 3295  | 3561          |
|                        | 3   I absorbée     | (A)    |      |      |      | 8.63 | 10.2 | 11.7 | 13.2 | 14.5  | 15.8          |

| <b>50 Hz R449A (*)</b> |                    |        |      |      |      |      |      |      |      |       |               |
|------------------------|--------------------|--------|------|------|------|------|------|------|------|-------|---------------|
|                        |                    |        |      |      |      |      |      |      |      |       | <b>N°2235</b> |
| 4   T condensation     | 5   T évaporation  | (°C)   | -25  | -20  | -15  | -10  | -5   | 0    | 5    | 10    | 15            |
| <b>30</b>              | 1   P frigorifique | (Watt) | 1994 | 2955 | 3963 | 5057 | 6277 | 7664 | 9257 | 11096 | 13222         |
|                        | 2   P absorbée     | (W)    | 1276 | 1514 | 1706 | 1866 | 2008 | 2145 | 2293 | 2465  | 2675          |
|                        | 3   I absorbée     | (A)    | 5.70 | 6.62 | 7.47 | 8.26 | 8.96 | 9.58 | 10.1 | 10.5  | 10.9          |
| <b>40</b>              | 1   P frigorifique | (Watt) |      | 2114 | 3133 | 4195 | 5338 | 6603 | 8030 | 9659  | 11530         |
|                        | 2   P absorbée     | (W)    |      | 1456 | 1744 | 1982 | 2184 | 2364 | 2536 | 2714  | 2912          |
|                        | 3   I absorbée     | (A)    |      | 6.49 | 7.61 | 8.66 | 9.64 | 10.5 | 11.3 | 12.1  | 12.7          |
| <b>50</b>              | 1   P frigorifique | (Watt) |      |      | 2219 | 3255 | 4328 | 5479 | 6747 | 8173  | 9796          |
|                        | 2   P absorbée     | (W)    |      |      | 1672 | 2018 | 2310 | 2562 | 2789 | 3003  | 3220          |
|                        | 3   I absorbée     | (A)    |      |      | 7.46 | 8.81 | 10.1 | 11.3 | 12.4 | 13.4  | 14.3          |
| <b>60</b>              | 1   P frigorifique | (Watt) |      |      |      | 2276 | 3286 | 4329 | 5445 | 6674  | 8057          |
|                        | 2   P absorbée     | (W)    |      |      |      | 1935 | 2348 | 2703 | 3014 | 3295  | 3561          |
|                        | 3   I absorbée     | (A)    |      |      |      | 8.63 | 10.2 | 11.7 | 13.2 | 14.5  | 15.8          |

**1 = cooling capacity 2 = power input 3 = current 4 = condensing temperature 5 = evaporating temperature**

(\*) Veuillez vous référer strictement aux Recommandations d'Utilisation et Bulletins Marketing Tecumseh du fait de la température de refoulement élevée pour les applications LBP.  
 (\*) Due to very high discharge temperature especially on LBP conditions, please strictly refer to Tecumseh Guidelines & Marketing Bulletin when using this refrigerant.

**Nota : Tecumseh se réserve le droit de modifier les informations contenues dans ce document sans préavis.**  
**Note : Tecumseh reserves the right to change information contained in this document without notification.**

© 2021 Tecumseh Products Company  
All rights reserved